

## BFF Sofa

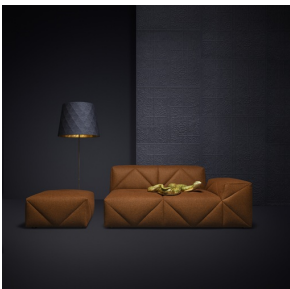
MARCEL WANDERS



The award-winning BFF Sofa by Marcel Wanders is everyone's new best friend! A high quality, soft yet firm modular sofa system, consisting of a wide variety of modules for endless configurations.

---

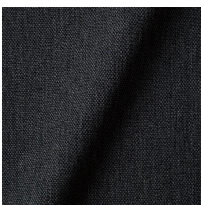
### *Detailing*



The BFF Sofa is available in more than 200 fabrics.

---

### *Colours*

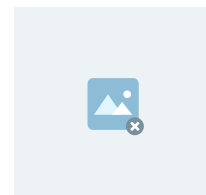


Justo, Bazalt

CAT 1

Silver

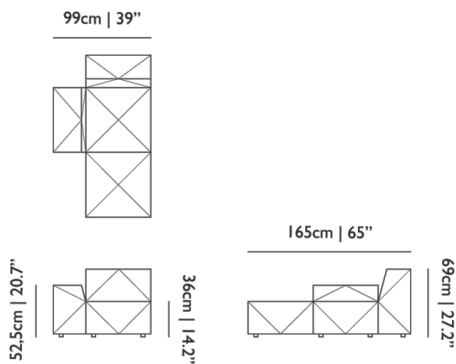
Vesper, Silver



Grey

## BFF Sofa / Chaise Longue CL01 Left, Low

### Dimensions



### Product

**WIDTH** 99cm | 39"  
**HEIGHT** 69cm | 27.2"  
**DEPTH** 165cm | 65"  
**WEIGHT NETTO** 59kg | 130.07lbs

### Packaging

**WIDTH** 105cm | 41.3"  
**HEIGHT** 75cm | 29.5"  
**CUBAGE** 1.61m<sup>3</sup> | 56.86ft<sup>3</sup>  
**LENGTH** 205cm | 80.7"  
**WEIGHT** 59kg | 130.07lbs

### Technical

#### ADDITIONAL

A modular sofa system that will befriend any interior. Design your own BFF Sofa and find out exact measurements with our configurator: <https://www.mooodi.com/bff-sofa>

#### MATERIAL

Wooden frame, steel springs, foam.

#### HEIGHT ARMREST

56cm | 22"

#### SEAT DEPTH

135cm | 53.1"

#### SEAT HEIGHT

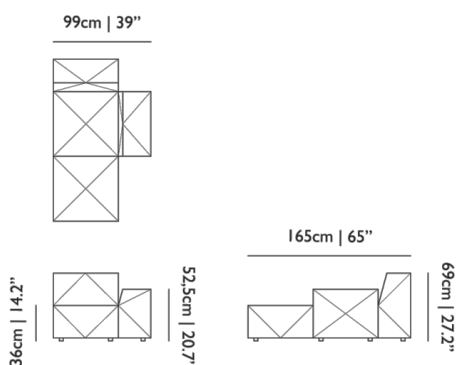
36cm | 14.2"

#### SEAT WIDTH

74cm | 29.1"

## BFF Sofa / Chaise Longue CL02 Right, Low

### Dimensions



### Product

**WIDTH** 99cm | 39"  
**HEIGHT** 69cm | 27.2"  
**DEPTH** 165cm | 65"  
**WEIGHT NETTO** 59kg | 130.07lbs

### Packaging

**WIDTH** 105cm | 41.3"  
**HEIGHT** 75cm | 29.5"  
**CUBAGE** 1.61m<sup>3</sup> | 56.86ft<sup>3</sup>  
**LENGTH** 205cm | 80.7"  
**WEIGHT** 59kg | 130.07lbs

---

## Technical

### ADDITIONAL

A modular sofa system that will befriend any interior. Design your own BFF Sofa and find out exact measurements with our configurator: <https://www.mooodi.com/bff-sofa>

### MATERIAL

Wooden frame, steel springs, foam.

### HEIGHT ARMREST

56cm | 22"

### SEAT DEPTH

135cm | 53.1"

### SEAT HEIGHT

36cm | 14.2"

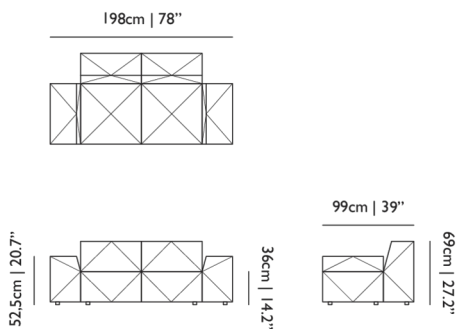
### SEAT WIDTH

74cm | 29.1"

---

## BFF Sofa / Double Seater DE01 Low

### Dimensions



### Product

**WIDTH** 198cm | 78"

**HEIGHT** 69cm | 27.2"

**DEPTH** 99cm | 39"

### Packaging

**WIDTH** 105cm | 41.3"

**HEIGHT** 75cm | 29.5"

**CUBAGE** 1.61m<sup>3</sup> | 57.01ft<sup>3</sup>

**LENGTH** 205cm | 80.7"

**WEIGHT** 86kg | 189.6lbs

---

## Technical

### ADDITIONAL

A modular sofa system that will befriend any interior. Design your own BFF Sofa and find out exact measurements with our configurator: <https://www.mooodi.com/bff-sofa>

### MATERIAL

Wooden frame, steel springs, foam.

### HEIGHT ARMREST

56cm | 22"

### SEAT DEPTH

69cm | 27.2"

### SEAT HEIGHT

36cm | 14.2"

### SEAT WIDTH

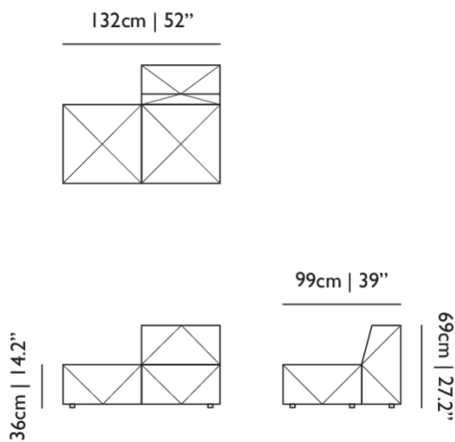
135cm | 53.1"

### SEATING CAPACITY

2

## BFF Sofa / Double element DE07 Dormeuse

### Dimensions



### Product

**WIDTH** 132cm | 52"  
**HEIGHT** 69cm | 27.2"  
**DEPTH** 99cm | 39"

### Packaging

**WIDTH** 105cm | 41.3"  
**HEIGHT** 75cm | 29.5"  
**CUBAGE** 1.1m<sup>3</sup> | 38.93ft<sup>3</sup>  
**LENGTH** 140cm | 55.1"  
**WEIGHT** 47kg | 103.62lbs

### Technical

#### ADDITIONAL

A modular sofa system that will befriend any interior. Design your own BFF Sofa and find out exact measurements with our configurator: <https://www.mooodi.com/bff-sofa>

#### MATERIAL

Wooden frame, steel springs, foam.

#### SEAT DEPTH

69cm | 27.2"

#### SEAT HEIGHT

36cm | 14.2"

#### SEAT WIDTH

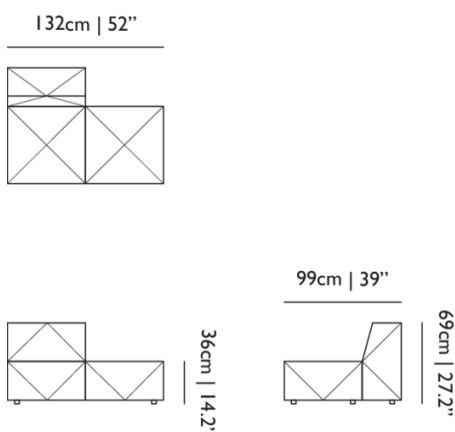
135cm | 53.1"

#### SEATING CAPACITY

2

## BFF Sofa / Double element DE08 Dormeuse

### Dimensions



### Product

**WIDTH** 132cm | 52"  
**HEIGHT** 69cm | 27.2"  
**DEPTH** 99cm | 39"

### Packaging

**WIDTH** 105cm | 41.3"  
**HEIGHT** 75cm | 29.5"  
**CUBAGE** 1.1m<sup>3</sup> | 38.93ft<sup>3</sup>  
**LENGTH** 140cm | 55.1"  
**WEIGHT** 47kg | 103.62lbs

---

## Technical

### ADDITIONAL

A modular sofa system that will befriend any interior. Design your own BFF Sofa and find out exact measurements with our configurator: <https://www.mooodi.com/bff-sofa>

### MATERIAL

Wooden frame, steel springs, foam.

### SEAT DEPTH

69cm | 27.2"

### SEAT HEIGHT

36cm | 14.2"

### SEAT WIDTH

135cm | 53.1"

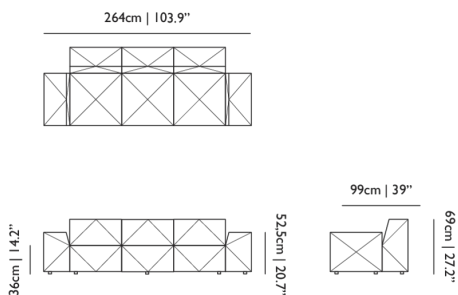
### SEATING CAPACITY

2

---

## BFF Sofa / Triple Seater TE01 Low

### Dimensions



### Product

**WIDTH** 264cm | 103.9"

**HEIGHT** 69cm | 27.2"

**DEPTH** 99cm | 39"

### Packaging

**WIDTH** 105cm | 41.3"

**HEIGHT** 75cm | 29.5"

**CUBAGE** 2.13m<sup>3</sup> | 75.09ft<sup>3</sup>

**LENGTH** 270cm | 106.3"

**WEIGHT** 117kg | 257.94lbs

---

## Technical

### ADDITIONAL

A modular sofa system that will befriend any interior. Design your own BFF Sofa and find out exact measurements with our configurator: <https://www.mooodi.com/bff-sofa>

### MATERIAL

Wooden frame, steel springs, foam.

### HEIGHT ARMREST

56cm | 22"

### SEAT DEPTH

69cm | 27.2"

### SEAT HEIGHT

36cm | 14.2"

### SEAT WIDTH

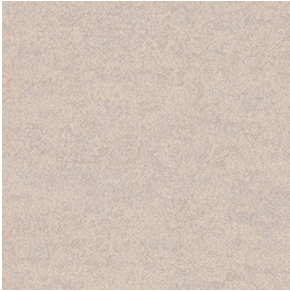
200cm | 78.7"

### SEATING CAPACITY

3

# Upholstery

*ARDA (available in 12 colours)*



**ABRASION**

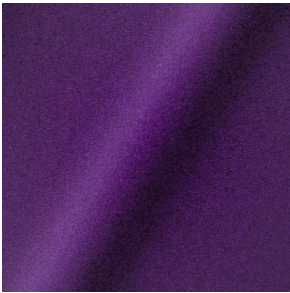
50000 martindale  
lightfastness 5 - 6  
pilling 4 - 5

**FIRE RESISTANCE**

BS 5852 - Ignition source  
0 (Cigarette)  
BS 5852 - Ignition source  
5 (Crib 5)  
BS 5852 - Ignition source  
1 (Match flame equivalent)  
EN 1021-1 (Cigarette)  
EN 1021-2 (Match)  
TB 117-2013  
EU Ecolabel

---

*DIVINA 3 (available in 56 colours)*



**COMPOSITION**

100% WO

**ABRASION**

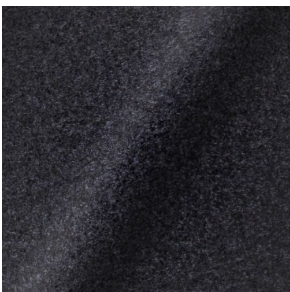
45000 martindale  
lightfastness 7  
pilling 3

**FIRE RESISTANCE**

BS 5852 - Ignition source  
0 (Cigarette)  
BS 5852 - Ignition source  
5 (Crib 5)  
BS 5852 - Ignition source  
1 (Match flame equivalent)  
EN 1021-1 (Cigarette)  
EN 1021-2 (Match)  
TB 117-2013  
EU Ecolabel

---

*DIVINA MD (available in 27 colours)*



**COMPOSITION**

100% WO

**ABRASION**

45000 martindale  
lightfastness 6  
pilling 3

**FIRE RESISTANCE**

BS 5852 - Ignition source  
0 (Cigarette)  
BS 5852 - Ignition source  
5 (Crib 5)  
BS 5852 - Ignition source  
1 (Match flame equivalent)  
EN 1021-1 (Cigarette)  
EN 1021-2 (Match)  
EU Ecolabel

*DIVINA MELANGE 3* (available in 49 colours)



**COMPOSITION**

100% WO

**ABRASION**

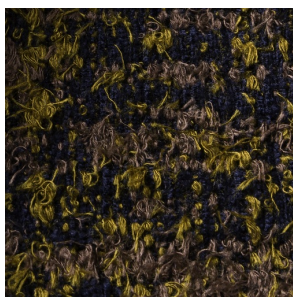
45000 martindale  
lightfastness 6 - 7  
pilling 3

**FIRE RESISTANCE**

BS 5852 - Ignition source  
0 (Cigarette)  
BS 5852 - Ignition source  
5 (Crib 5)  
BS 5852 - Ignition source  
1 (Match flame equivalent)  
EN 1021-1 (Cigarette)  
EN 1021-2 (Match)  
TB 117-2013  
EU Ecolabel

---

*Bearded Leopard* (available in 3 colours)



**COMPOSITION**

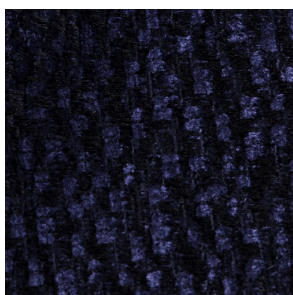
77% CV, 15% PES, 7% CO,  
1% PA

**ABRASION**

15000 martindale  
lightfastness 4 - 6  
pilling 4

---

*Calligraphy Bird* (available in 4 colours)



**COMPOSITION**

64% CV, 21% PES, 15%  
CO

**ABRASION**

50000 martindale  
lightfastness 4 - 6  
pilling 5

---

*Dodo Pavone* (available in 3 colours)



**COMPOSITION**

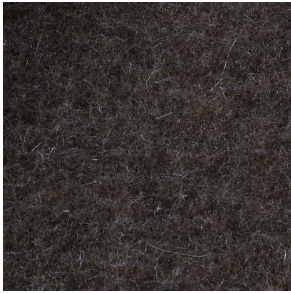
12% CO, 88% PES

**ABRASION**

40000 martindale  
lightfastness 5  
pilling 4 - 5

---

*Blushing Sloth Melange Mohair (available in 1 colours)*



**COMPOSITION**

85% WV, 15% WM

**ABRASION**

15000 martindale  
lightfastness 4 - 6  
pilling 2 - 3

---

*Blushing Sloth Woolly Mohair (available in 1 colours)*



**COMPOSITION**

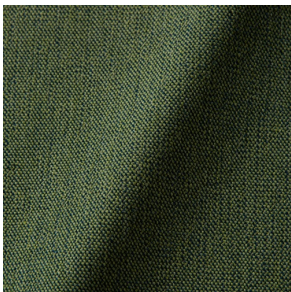
24% PES, 15% PA, 8% CO,  
24% WM, 29% WV

**ABRASION**

40000 martindale  
lightfastness 4 - 6  
pilling 3 - 4

---

*JUSTO (available in 10 colours)*



**COMPOSITION**

15% CO, 35% PC, 10% PA,  
40% CV

**ABRASION**

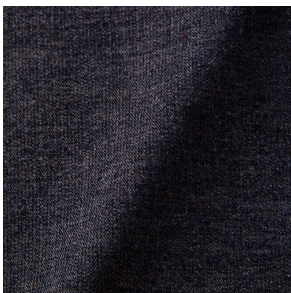
50000 martindale  
lightfastness 5  
pilling 4

**FIRE RESISTANCE**

EN 1021-1 (Cigarette)  
EN 1021-2 (Match)  
TB 117-2013

---

*LISCIO (available in 11 colours)*



**COMPOSITION**

35% WO, 35% CV, 21%  
CO, 9% PA

**ABRASION**

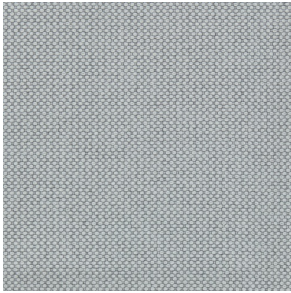
30000 martindale  
lightfastness 4 - 6  
pilling 4

**FIRE RESISTANCE**

TB 117-2013



*MERIT (available in 43 colours)*



**COMPOSITION**

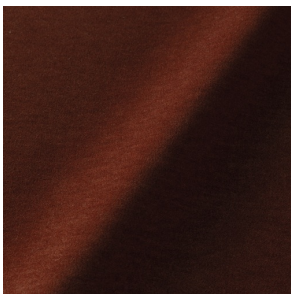
24% PES, 76%

**ABRASION**

85000 martindale  
lightfastness 7  
pilling 4

---

*PALETTE (available in 24 colours)*



**COMPOSITION**

42% CO, 29% WO, 29%  
TL

**ABRASION**

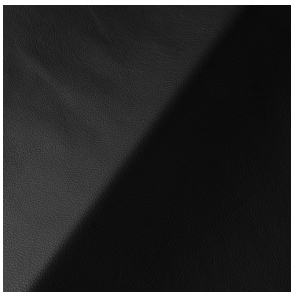
45000 martindale  
lightfastness 4 - 5  
pilling 3 - 3

**FIRE RESISTANCE**

BS 5852 - Ignition source  
0 (Cigarette)  
TB 117-2013  
BS 5852 - Ignition source  
5 (Crib 5)

---

*SAVANNE (available in 3 colours)*

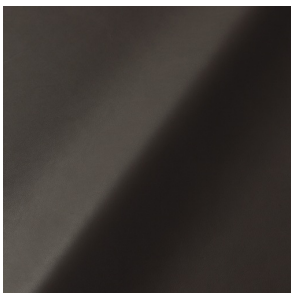


**FIRE RESISTANCE**

EN 1021-1 (Cigarette)  
EN 1021-2 (Match)  
TB 117-2013  
OEKO-TEX

---

*SHADE (available in 6 colours)*



**ABRASION**

lightfastness 3 - 4

**FIRE RESISTANCE**

EN 1021-1 (Cigarette)  
EN 1021-2 (Match)  
TB 117-2013

*SOLIS (available in 9 colours)*



**COMPOSITION**

60% WO, 30% PES, 2%  
PA, 3% PC

**ABRASION**

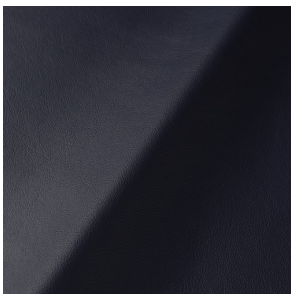
40000 martindale  
lightfastness 5  
pilling 3 - 4

**FIRE RESISTANCE**

EN 1021-1 (Cigarette)  
EN 1021-2 (Match)  
TB 117-2013

---

*SPECTRUM (available in 11 colours)*



**ABRASION**

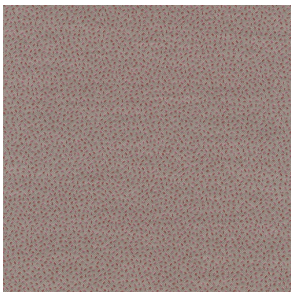
lightfastness 6 - 6

**FIRE RESISTANCE**

EN 1021-1 (Cigarette)  
EN 1021-2 (Match)  
TB 117-2013  
OEKO-TEX

---

*SPRINKLES (available in 23 colours)*



**ABRASION**

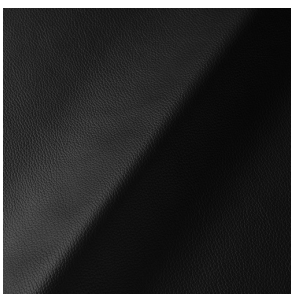
80000 martindale  
lightfastness 7  
pilling 4

**FIRE RESISTANCE**

EU Ecolabel  
BS 5852 - Ignition source  
0 (Cigarette)  
BS 5852 - Ignition source  
5 (Crib 5)  
BS 5852 - Ignition source  
1 (Match flame equivalent)  
EN 1021-1 (Cigarette)  
EN 1021-2 (Match)  
TB 117-2013

---

*ULTRA (available in 6 colours)*



**ABRASION**

lightfastness 6 - 7

**FIRE RESISTANCE**

EN 1021-1 (Cigarette)  
EN 1021-2 (Match)  
TB 117-2013  
ANSI/BIFMA M7.1 (Total  
Volatile Organic  
Compounds)

---

*VESPER* (available in 8 colours)



**COMPOSITION**

10% CO, 40% LI, 10% PA,  
10% PES, 30% CV

**ABRASION**

40000 martindale  
lightfastness 5  
pilling 4

**FIRE RESISTANCE**

EN 1021-1 (Cigarette)  
EN 1021-2 (Match)  
TB 117-2013