

# Techno Bee Wallcovering

MOOOI



Techno Bee Wallcovering is a 3D textile wall covering on non-woven backing with a distinctive Moiré effect. The wallcovering features a soft gauze textile stretched over a textured relief, revealing the textile's colour through the grid of the gauzy layer.

---

## *Detailing*



Be captivated by the dynamic 3D textile design, where the Moiré effect brings depth and movement, turning your walls into a work of art.

---

## *Colours*

Dusty Pink

Oyster White

Sand

---

# Techno Bee Wallcovering / Techno Bee

## Product

**WIDTH** 90cm | 35.4"  
**HEIGHT** 100cm | 39.4"  
**DEPTH** 0.2cm | 0.1"

## Packaging

**WIDTH** 90cm | 35.4"  
**HEIGHT** 1cm | 0.4"  
**CUBAGE** 0m<sup>3</sup> | 0ft<sup>3</sup>  
**LENGTH** 1cm | 0.4"  
**WEIGHT** 0.23kg | 0.51lbs

## Technical

### MATERIAL

Non-woven wallcovering

### COLLECTION

Mooodi Wallcovering Green House

### UNIT DIMENSIONS

Width 90 cm (35.4"), sold by Sold by the linear metre/yard

### ADHESIVE

Arte Clearpro or a good quality dispersion adhesive

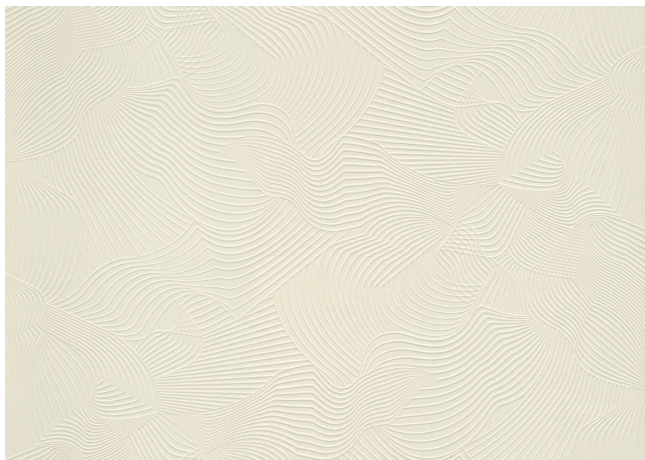
### CARE

Spongeable during hanging (dab away damp glue)

### HOW TO REMOVE

 Strippable

### REPEAT IMAGE



### PATTERN

Techno Bee

### REPEAT TYPE

 Drop match

### REPEAT DIMENSIONS

Height 64 cm (25.2"), offset 32 cm (12.6")

### LIGHT RESISTANCE

 Good lightfastness

### HOW TO PASTE

Paste the wall