

m o o o i<sup>®</sup>



## The Golden Chair

---

The Golden Chair, designed by Nika Zupanc for Moooi, is available in a Glossy Golden, Matt Golden and Black on Black composition. It's elegant, retro-looking base can also be dressed in a selection of fabrics to match different interiors.

---

<b>Designer</b>	Nika Zupanc
<b>Year of design</b>	2013
<b>Material</b>	Gold chromed steel frame, Gold synthetic leather

---

# m o o o i<sup>®</sup>

---

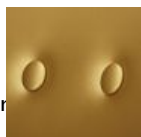
## colours

Please note that there is a matt version available that has a higher martindale of 40.000, which is an advantage when using the chair in larger projects.



### Gold

100% skai® leather  
20.000 martindale  
BS 5852 source  
0&1



### Matt gold | for project use

100% skai® leather  
>200.000  
martindale  
BS 5852 source  
0&1



### Black

100% skai® leather  
>50.000  
Martindale  
EN1021-1/2  
BS5852 part I  
DIN 4102-B2  
NF M2

## Macchedil, Grezzo

**composition**

47% co, 20% vi, 18% pi, 8% li, 5% pc, 2% af

**abrasion**

18.000 martindale

**lightfastness 4**

**firetest**

EN1021 I&2



## Macchedil, Sottile

**composition**

49% vi, 24% pl, 21% li, 6% co

**abrasion**

30.000 martindale

**lightfastness 4**

**firetest**

EN1021 I&2



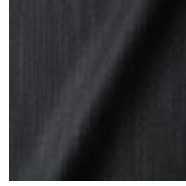
m o o o i<sup>®</sup>



Macchedil Sottile  
**Light brown**



Macchedil Sottile  
**Grey grey**



Macchedil Sottile  
**Anthracite**



Macchedil Sottile  
**Blue grey**



Macchedil Sottile  
**Cappuccino**



Macchedil Sottile  
**Deep blue**

---

## Abbracci

### composition

100% pl

### abrasion

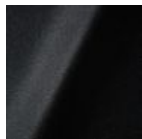
50.000 martindale

### lightfastness 4

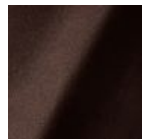
### firetest

FR BS5852 0/1

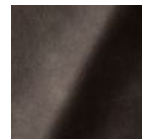
EN1021 I&2



Abbracci  
**Black**



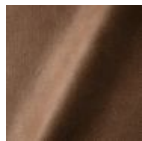
Abbracci  
**Brown**



Abbracci  
**Grey**



Abbracci  
**Oyster**



Abbracci  
**Taupe**

---

## Oray

### composition

8% co, 38% vi, 15% pl, 39% li

### abrasion

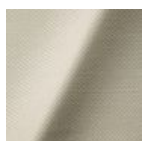
30.000 martindale

### lightfastness 4

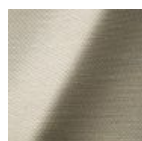
### firetest

FR BS5852 0/1

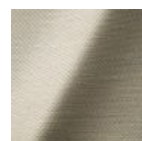
EN 1021 I&2



Oray  
**Cream**



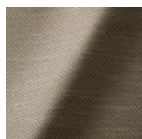
Oray  
**Sand**



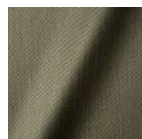
Oray  
**Rock**



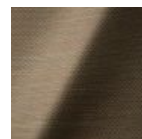
Oray  
**Mineral**



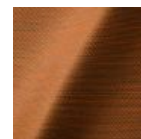
Oray  
**Gravel**



Oray  
**Dark Gull**



Oray  
**Copper**

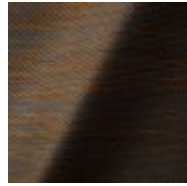


Oray  
**Rust**

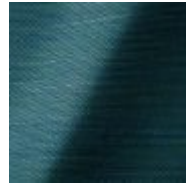
# m o o o i<sup>®</sup>



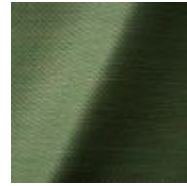
Oray  
**Flamboyant**



Oray  
**Oil**



Oray  
**Aqua**



Oray  
**Peyote**



Oray  
**Ocean**



Oray  
**Metal**



Oray  
**Griffin**



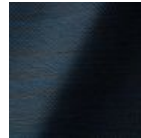
Oray  
**Dusk**



Oray  
**Chestnut**



Oray  
**Dark**



Oray  
**Indigo**



Oray  
**Ochre**

---

## Jacquard andaz

**composition:**

34% cotton - 30% viscose - 24% linen - 12% polyamide

**abrasion:**

25000 martindale

**lightfastness** 4-5

**firetest:**

BS EN 1021 1&2



Jacquard  
**Andaz**

---

## Jaquard Fresco

**composition**

40% vi ,36% co,14% pl, 10% li

**abrasion**

20.000> martindale

**lightfastness** 4-5

**firetest**

EN1021 1&2



Jaquard  
**Fresco**

## Jacquard Old Black & Blue

**composition**

52% vi, 38% co, 10% li

**abrasion**

20.000> martindale

**lightfastness** 4-5

**firetest**

EN1021 I&2



Jacquard  
**Old Blue**



Jacquard  
**Old Black**

## Justo

**composition**

15% CO, 35% PC, 10% PL, 40% VI

**abrasion**

50.000 Martindale rubs, EN ISO 12947

**lightfastness**

Note 5, EN ISO 105-B02

**fire test**

EN 1021-1/2

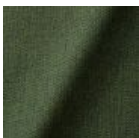
US. Cal. Bull. 117-2013

NFPA 260

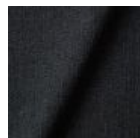
Upon request, with treatment:

BS5852 part1

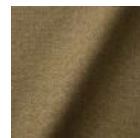
BS5852 crib5



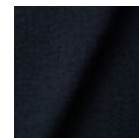
Justo  
**Alge**



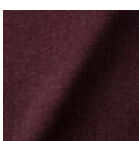
Justo  
**Bazalt**



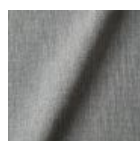
Justo  
**Bred**



Justo  
**Flod**



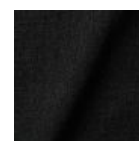
Justo  
**Hinde**



Justo  
**Lyse**



Justo  
**Muse**



Justo  
**Nat**



m o o o i<sup>®</sup>



Justo  
**Sennep**



Justo  
**Sten**

## Liscio

**composition**

35% WO / 35% CV / 21% CO / 9% PA

**abrasion**

30.000 Martindale

**lightfastness**

4-6

**firetest**

US. Cal. Bull. 117-2013

Upon request, with treatment:

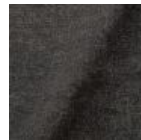
BS5852 part I



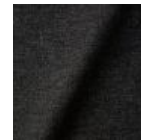
Liscio  
**Grigio Blu  
Scuro**



Liscio  
**Grigio Blu**



Liscio  
**Grigio Scuro**



Liscio  
**Muscio Scuro**



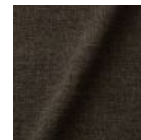
Liscio  
**Muscio**



Liscio  
**Argento**



**Liscio**  
Nebbia



Liscio  
**Pietra**



Liscio  
**Perla**



Liscio  
**Latte Scuro**



Liscio  
**Latte**

## Twill

**composition**

72% wo, 8% pa, 20% pl

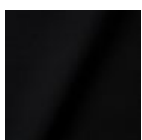
**abrasion**

75.000 martindale

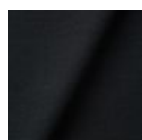
**lightfastness 5**

**firetest**

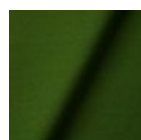
EN1021 I&2



Twill  
**Caviar**



Twill  
**Graphite**



Twill  
**Grass**

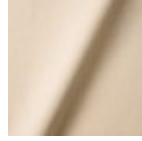


Twill  
**Grey**

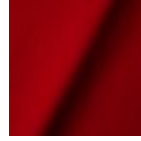
m o o o i<sup>®</sup>



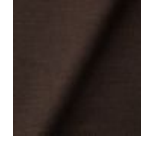
Twill  
**Linen**



Twill  
**Natural**



Twill  
**Passion**



Twill  
**Walnut**

## Twill Melange

**composition**

60% WO / 20% PES / 20% PA

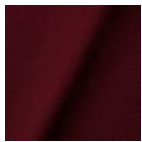
**abrasion**

80.000 martindale

**lightfastness** 6-7

**firetest**

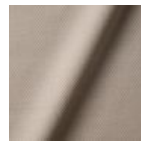
EN1021-1/2  
US. Cal. Bull. 117-2013  
BS5852 part I  
DIN 4102-B2



Twill Melange  
**Chili**



Twill Melange  
**Dust**



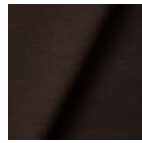
Twill Melange  
**Flour**



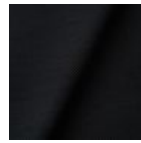
Twill Melange  
**Lagoon**



Twill Melange  
**Lavender**



Twill Melange  
**Peat**



Twill Melange  
**Slate**



Twill Melange  
**Twig**

## Trickle

**composition**

60% WO / 20% PES / 20% PA

**abrasion**

80.000 martindale

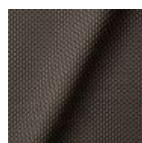
**lightfastness** 6

**firetest**

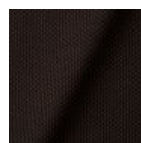
EN1021-1/2  
US. Cal. Bull. 117-2013  
BS5852 part I  
DIN 4102-B2



Trickle  
**Flour**



Trickle  
**Twig**

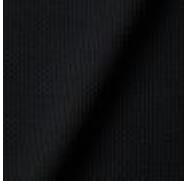


Trickle  
**Peat**

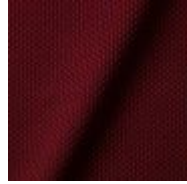


Trickle  
**Dust**

m o o o i<sup>®</sup>



**Trickle**  
Slate



Trickle  
**Chili**



Trickle  
**Lavender**



Trickle  
**Lagoon**

---

## Velour

**composition**

77% wo, 8% pa, 15% pl

**abrasion**

100.000 martindale

**lightfastness 7****firetest**

FR BS5852 0/1

EN1021 I&2



Velour  
**Coral**



Velour  
**Stone**



Velour  
**Moss**

---

## Kvadrat Fabrics

### Kvadrat Fabrics

Selected Moooi products can be upholstered with a collection of Kvadrat fabrics. Kvadrat designs high-quality upholstery, in an extensive range of colours and textures.

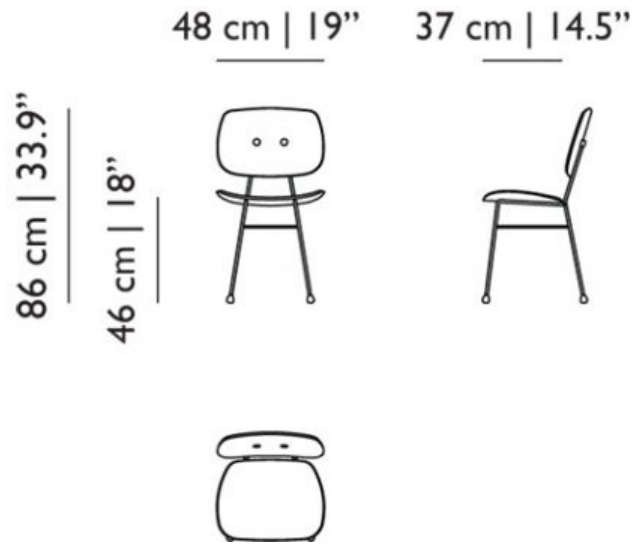
Go to our [Kvadrat fabrics page](#) for a full overview of all fabric families you can choose from.



# m o o o i<sup>®</sup>

---

## dimensions



---

## cleaning instructions

Moooli recommends using a good furniture polish and a soft cloth. Apply generously in layers to the surface and use the cloth to shine. Do not use abrasive fabrics, gently remove tough stains with warm water and a trusted multi-surface cleaner.

---

## packaging

H 51 cm | 20,1"

W 49 cm | 19,3"

D 90 cm | 35,4"

Colli 1/1

Product weight:

9 KG | 19,8 lb

With packaging:

10,5 KG | 23,1 lb

---

## Bearded leopard Jacquard

### composition

77% VI / 15% PES / 7% CO / 1% PA

### abrasion

15.000 Martindale rubs, EN ISO 12947

### lightfastness

Note 4-6, EN ISO 105-B02

### firetest

EN1021-1/2

Upon request and with treatment:

BS5852 part I



---

## Blushing Sloth Woolly Mohair

### composition

85% WV / 15% WM

### abrasion

15.000 Martindale rubs, EN ISO 12947

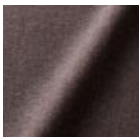
### lightfastness

Note 4-6, EN ISO 105-B02

### firetest

EN1021-1/2

BS5852 part I



### Extinct

### Animals

### Fabric

### Collection

Blushing Sloth

Woolly Mohair



## Calligraphy Bird Jacquard

**composition**

64% VI, 21% PES, 15% CO

**abrasion**

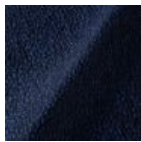
50.000 Martindale rubs, EN ISO 12947

**lightfastness**

Note 4-6, EN ISO 105-B02

**firetest**

Upon request, with treatment;  
BS5852 part I



Extinct Animals  
Fabric Collection  
Calligraphy Bird  
Jacquard

---

## The Menagerie of Extinct Animals

**composition**

100% PES

**abrasion**

50.000 Martindale rubs, EN ISO 12947

**lightfastness**

Note 4-6, EN ISO 105-B02

**firetest**

EN1021-1/2  
Upon request, with treatment;  
BS5852 part I

---

## Flying Coral Fish Scaled



**Extinct  
Animals  
Fabric  
Collection**

Flying Coral Fish  
Scaled

**Type**  
Pure aniline,  
nubuck finish

---

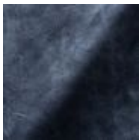
## Dwarf Rhino Buffed

**composition**

100% steer

**Type**

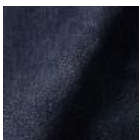
Pure aniline, nubuck finish



Extinct Animals  
Fabric Collection  
Dwarf Rhino  
Buffed

---

## Dwarf Rhino Crackle



**Extinct  
Animals  
Fabric  
Collection**

Dwarf Rhino  
Crackle

---

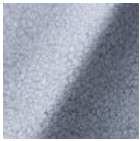
## Armoured Boar Crackle

**composition**

100% cow hide

**Type of leather**

Pure aniline, nubuck finish



---

## Armoured Boar Hairy

**composition**

100% cow skin

**lightfastness**

>3, ISO 105-B02:2004

