

m o o o i[®]



Cloud Sofa

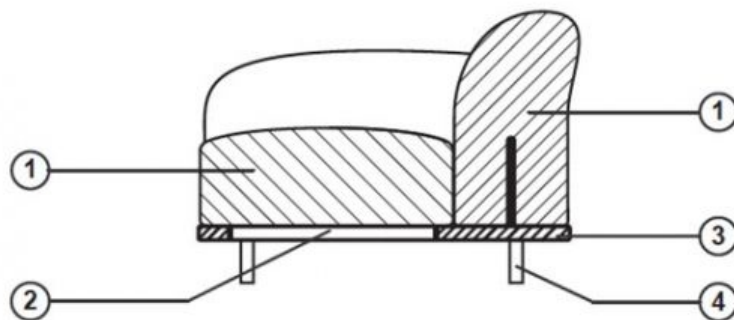
Have you ever wished that you could fall into the softness of a white cloud that looks like cotton candy?

Designer	Marcel Wanders
Year of design	2012
Material	Steel frame, moulded foam and dacron upholstered, steel connections.

technical

The cloud sofa is constructed in wood and foam, where the foam parts are connected to the wood base by steel connections. The foam of the side, seat and back is covered with dacron.

The finish of the upholstery buttons depend on the choice of fabric and colour.



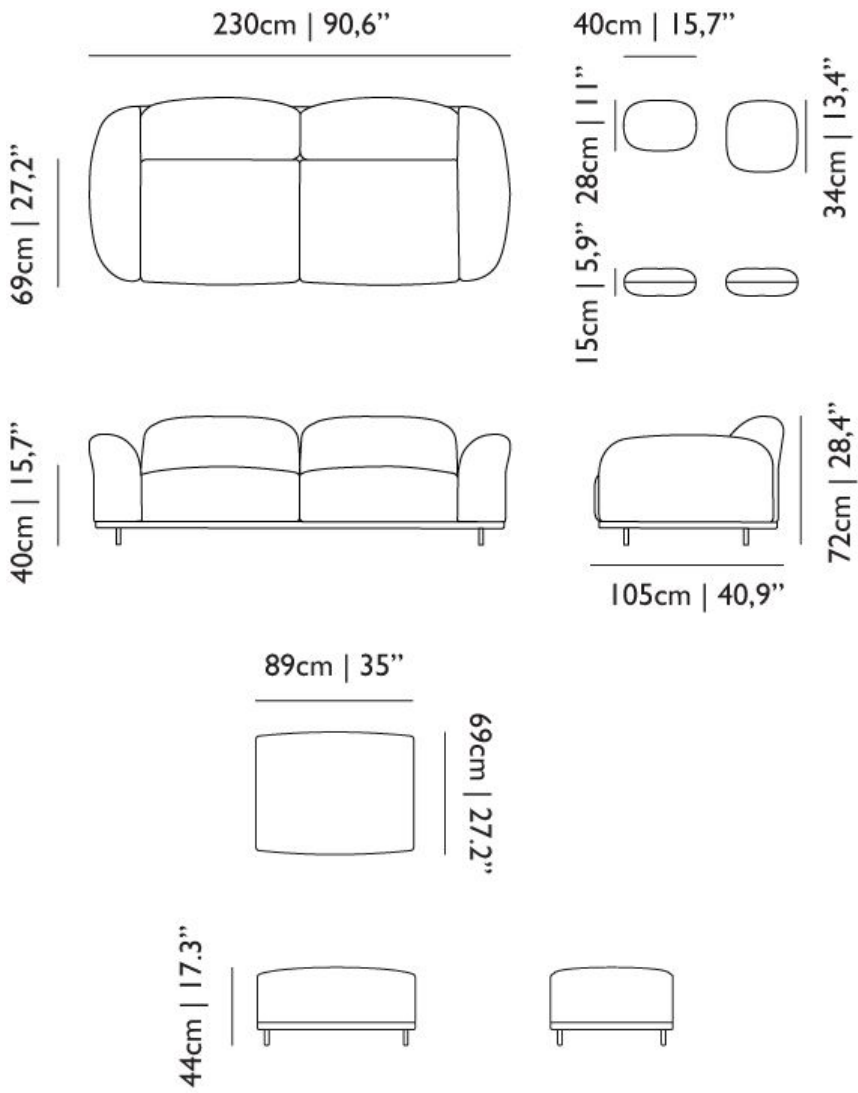
1. Fire retardant moulded foam and dacron
2. Elastic straps fixed in steel frame
3. Steel frame, covered with dacron and upholstered
4. Chromed steel legs (a 5th central leg is included)

upholstery categories

Bouclé
Twill

Summit Uni
Velour

dimensions



Bouclé

composition

43% co, 28% pan, 14% pa, 12% vi, 3% pl

abrasion

20.000> martindale

lightfastness 4

firetest

EN1021 I&2



Bouclé
Black white



Bouclé
Rainbow



Bouclé
Brown



Bouclé
Blue

Liscio

composition

35% WO / 35% CV / 21% CO / 9% PA

abrasion

30.000 Martindale

lightfastness

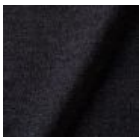
4-6

firetest

US. Cal. Bull. 117-2013

Upon request, with treatment:

BS5852 part I



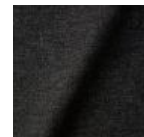
Liscio
Grigio Blu Scuro



Liscio
Grigio Blu



Liscio
Grigio Scuro



Liscio
Muscio Scuro



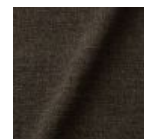
Liscio
Muscio



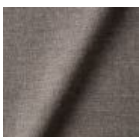
Liscio
Argento



Liscio
Nebbia



Liscio
Pietra



Liscio
Perla



Liscio
Latte Scuro



Liscio
Latte

Summit Melange

composition

20% WO / 5% PA / 15% PES
60% PES filling

abrasion

50.000 martindale

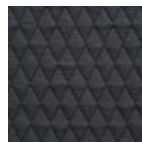
lightfastness 6

firetest

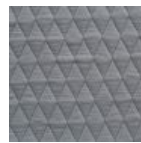
EN1021-1/2
US. Cal. Bull. 117-2013
BS5852 part1
DIN 4102-B2



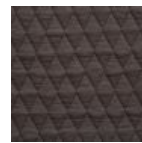
Summit Melange
Flour



Summit Melange
Slate



Summit Melange
Dust



Summit Melange
Peat



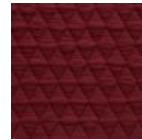
Summit Melange
Twig



Summit Melange
Lagoon



Summit Melange
Lavender



Summit Melange
Chili

Summit UNI

composition

22% wo, 2% pa, 14% pl, 62% pl filling

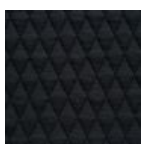
abrasion

50.000 martindale

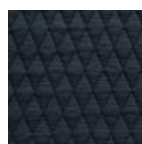
lightfastness 5

firetest

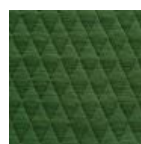
EN1021 1&2



Summit UNI
Caviar



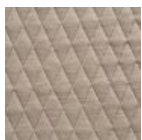
Summit UNI
Graphite



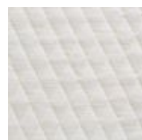
Summit UNI
Grass



Summit UNI
Grey



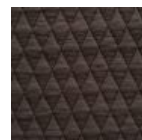
Summit UNI
Linen



Summit UNI
Natural



Summit UNI
Passion



Summit UNI
Walnut

Trickle

composition

60% WO / 20% PES / 20% PA

abrasion

80.000 martindale

lightfastness 6

firetest

EN1021-1/2

US. Cal. Bull. 117-2013

BS5852 part1

DIN 4102-B2



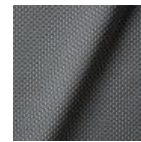
Trickle
Flour



Trickle
Twig



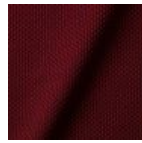
Trickle
Peat



Trickle
Dust



Trickle
Slate



Trickle
Chili



Trickle
Lavender



Trickle
Lagoon

Twill

composition

72% wo, 8% pa, 20% pl

abrasion

75.000 martindale

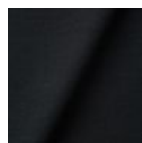
lightfastness 5

firetest

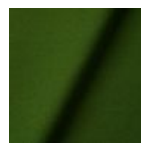
EN1021 I&2



Twill
Caviar



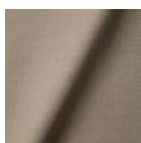
Twill
Graphite



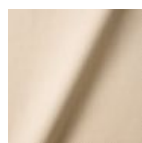
Twill
Grass



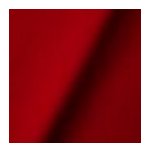
Twill
Grey



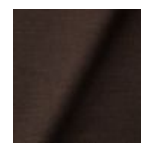
Twill
Linen



Twill
Natural



Twill
Passion



Twill
Walnut

Twill Melange

composition

60% WO / 20% PES / 20% PA

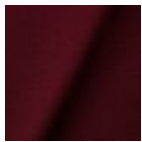
abrasion

80.000 martindale

lightfastness 6-7

firetest

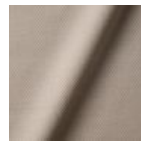
EN1021-1/2
US. Cal. Bull. 117-2013
BS5852 part1
DIN 4102-B2



Twill Melange
Chili



Twill Melange
Dust



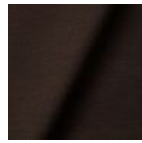
Twill Melange
Flour



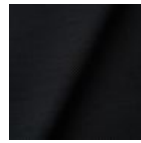
Twill Melange
Lagoon



Twill Melange
Lavender



Twill Melange
Peat



Twill Melange
Slate



Twill Melange
Twig

Velour

composition

77% wo, 8% pa, 15% pl

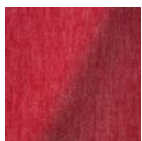
abrasion

100.000 martindale

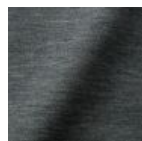
lightfastness 7

firetest

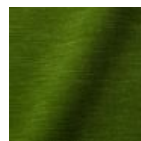
FR BS5852 0/1
EN1021 I&2



Velour
Coral



Velour
Stone



Velour
Moss

Dodo Pavone

composition

12% CO 88% PL

abrasion

40.000 Martindale rubs, EN ISO 12947

lightfastness

Note 5, EN ISO 105-B02

firetest

US. Cal. Bull. 117-2013

Upon request, with treatment:

BS5852 part I



Bearded leopard Jacquard

composition

77% VI / 15% PES / 7% CO / 1% PA

abrasion

15.000 Martindale rubs, EN ISO 12947

lightfastness

Note 4-6, EN ISO 105-B02

firetest

EN1021-1/2

Upon request and with treatment:

BS5852 part I



Blushing Sloth Melange Mohair

composition

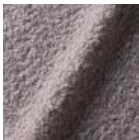
29% LANA / 24% LANA WM / 24% PES / 15% PA / 8% CO

abrasion

40.000 Martindale rubs, EN ISO 12947

lightfastness

Note 4-6, EN ISO 105-B02



Blushing Sloth Woolly Mohair

composition

85% WV / 15% WM

abrasion

15.000 Martindale rubs, EN ISO 12947

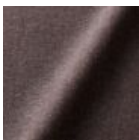
lightfastness

Note 4-6, EN ISO 105-B02

firetest

EN1021-1/2

BS5852 part 1



**Extinct
Animals
Fabric
Collection**

Blushing Sloth
Woolly Mohair

Calligraphy Bird Jacquard

composition

64% VI, 21% PES, 15% CO

abrasion

50.000 Martindale rubs, EN ISO 12947

lightfastness

Note 4-6, EN ISO 105-B02

firetest

Upon request, with treatment;
BS5852 part I



Extinct Animals
Fabric Collection
Calligraphy Bird
Jacquard