

m o o o i<sup>®</sup>



## ZLIQ Sofa

---

ZLIQ Sofa

**Designer**

Marcel Wanders

**Year of design**

2012

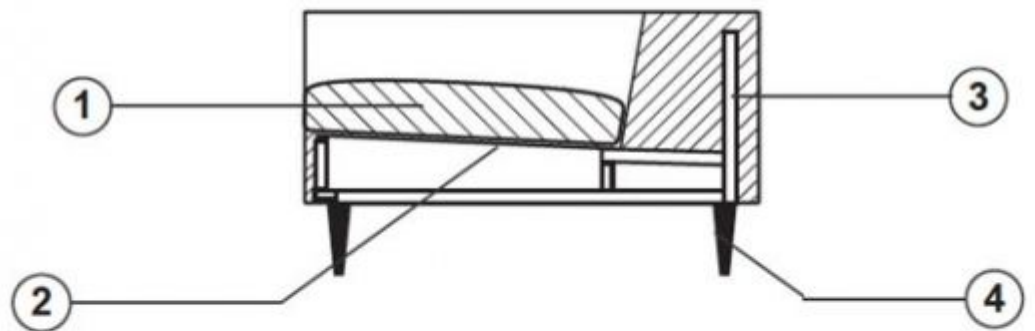
**Material**

Steel, Foam, Dacron

## technical

The Zliq sofa is constructed from a steel box frame covered in foam and dacron, the seat cushions made in foam and removable.

Zliq sofa is produced with removable covers except for the categories Faux, Arredo leather or Cervino leather. Back pillows are separately available.



1. Multiple density fire retardant foam composition + dacron
2. Elastic straps fixed on the wood base
3. Steel box frame covered
4. Chromed cast aluminium legs

---

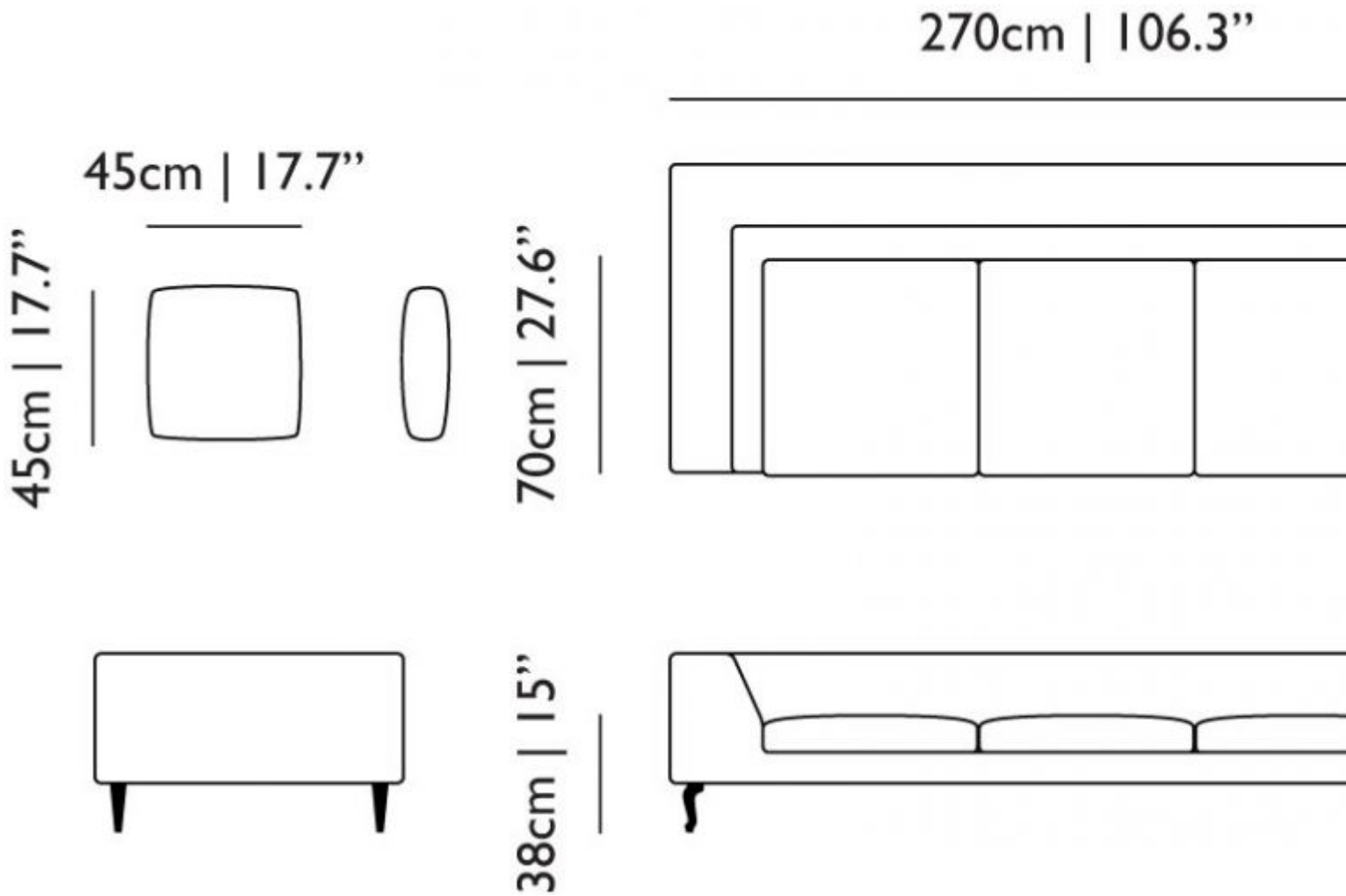
## pillows

Pillows are available separately.

CMHR foam, always upholstered in white or one of the available fabrics.

# m o o o i<sup>®</sup>

## dimensions



## Macchedil, Grezzo

### composition

47% co, 20% vi, 18% pi, 8% li, 5% pc, 2% af

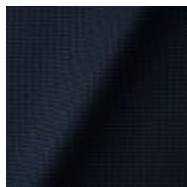
### abrasion

18.000 martindale

### lightfastness 4

### firetest

EN1021 I&2



Macchedil Grezzo  
**Black indigo**



Macchedil Grezzo  
**Pinkish**



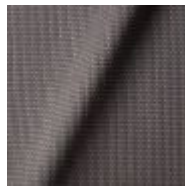
Macchedil Grezzo  
**Off white**



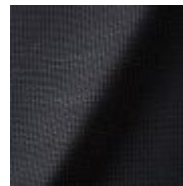
Macchedil Gr  
**Light grey**



Macchedil Grezzo  
**Light brown**



Macchedil Grezzo  
**Grey grey**



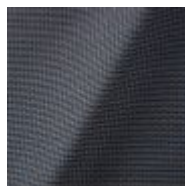
Macchedil Grezzo  
**Anthracite**



Macchedil Gr  
**Blue grey**



Macchedil Grezzo  
**Cappuccino**



Macchedil Grezzo  
**Deepblue**

## Macchedil, Sottile

### composition

49% vi, 24% pl, 21% li, 6% co

### abrasion

30.000 martindale

### lightfastness 4

### firetest

EN1021 I&2



Macchedil Sottile  
**Black indigo**



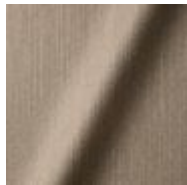
Macchedil Sottile  
**Pinkish**



Macchedil Sottile  
**Off white**



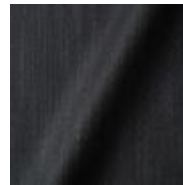
Macchedil So  
**Light grey**



Macchedil Sottile  
**Light brown**



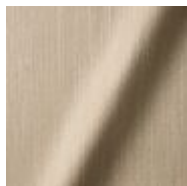
Macchedil Sottile  
**Grey grey**



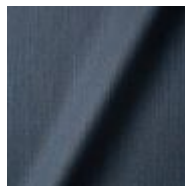
Macchedil Sottile  
**Anthracite**



Macchedil So  
**Blue grey**



Macchedil Sottile  
**Cappuccino**



Macchedil Sottile  
**Deep blue**

m o o o i<sup>®</sup>

## Abbracci

**composition**

100% pl

**abrasion**

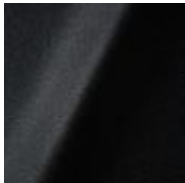
50.000 martindale

**lightfastness 4**

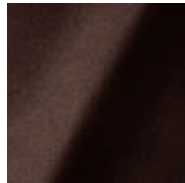
**firetest**

FR BS5852 0/I

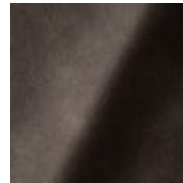
EN1021 I&2



Abbracci  
**Black**



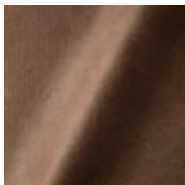
Abbracci  
**Brown**



Abbracci  
**Grey**



Abbracci  
**Oyster**



Abbracci  
**Taupe**

---

## Oray

**composition**

8% co, 38% vi, 15% pl, 39% li

**abrasion**

30.000 martindale

**lightfastness 4**

**firetest**

FR BS5852 0/I

EN 1021 I&2

# m o o o i<sup>®</sup>



Oray  
**Cream**



Oray  
**Sand**



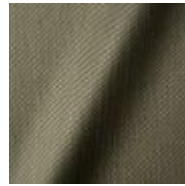
Oray  
**Rock**



Oray  
**Mineral**



Oray  
**Gravel**



Oray  
**Dark Gull**



Oray  
**Copper**



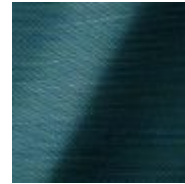
Oray  
**Rust**



Oray  
**Flamboyant**



Oray  
**Oil**



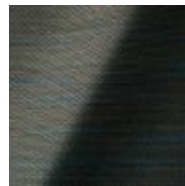
Oray  
**Aqua**



Oray  
**Peyote**



Oray  
**Ocean**



Oray  
**Metal**



Oray  
**Griffin**



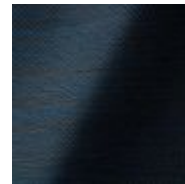
Oray  
**Dusk**



Oray  
**Chestnut**



Oray  
**Dark**



Oray  
**Indigo**



Oray  
**Ochre**

## Solis

### composition

2% PA 3% PC 30% PL 65% WO

### abrasion

40.000 Martindale rubs, EN ISO 12947

### lightfastness

Note 5, EN ISO 105-B02

### firetest

EN 1021-1/2

US. Cal. Bull. 117-2013

Upon request, with treatment:

BS5852 part 1

BS5852 crib 5



Solis  
Crust



Solis  
Dawn



Solis  
Fog



Solis  
Gray



Solis  
Paper



Solis  
Rain



Solis  
Spencer



Solis  
Suit



Solis  
Sunset



m o o o i<sup>®</sup>

## Jacquard andaz

**composition:**

34% cotton - 30% viscose - 24% linen - 12% polyamide

**abrasion:**

25000 martindale

**lightfastness** 4-5

**firetest:**

BS EN 1021 1&2



Jacquard  
**Andaz**

---

## Jaquard Fresco

**composition**

40% vi ,36% co,14% pl, 10% li

**abrasion**

20.000> martindale

**lightfastness** 4-5

**firetest**

EN1021 1&2



Jaquard  
**Fresco**

m o o o i<sup>®</sup>

## Jacquard Old Black & Blue

### composition

52% vi, 38% co, 10% li

### abrasion

20.000> martindale

### lightfastness 4-5

### firetest

EN1021 I&2



Jacquard  
**Old Blue**



Jacquard  
**Old Black**

---

## Justo

### composition

15% CO, 35% PC, 10% PL, 40% VI

### abrasion

50.000 Martindale rubs, EN ISO 12947

### lightfastness

Note 5, EN ISO 105-B02

### fire test

EN 1021-1/2

US. Cal. Bull. 117-2013

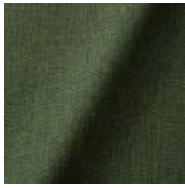
NFPA 260

Upon request, with treatment:

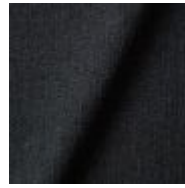
BS5852 part I

BS5852 crib5

# m o o o i<sup>®</sup>



Justo  
**Alge**



Justo  
**Bazalt**



Justo  
**Bred**



Justo  
**Flod**



Justo  
**Hinde**



Justo  
**Lyse**



Justo  
**Muse**



Justo  
**Nat**



Justo  
**Sennep**



Justo  
**Sten**

---

## Summit UNI

### composition

22% wo, 2% pa, 14% pl, 62% pl filling

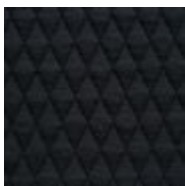
### abrasion

50.000 martindale

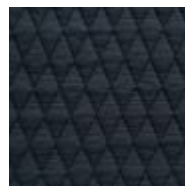
### lightfastness 5

### firetest

EN1021 I&2



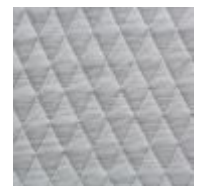
Summit UNI  
**Caviar**



Summit UNI  
**Graphite**



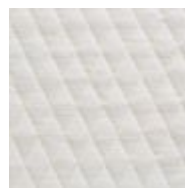
Summit UNI  
**Grass**



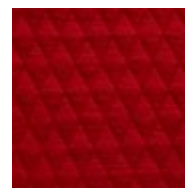
Summit UNI  
**Grey**



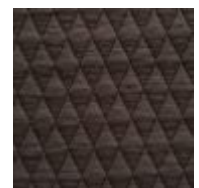
Summit UNI  
**Linen**



Summit UNI  
**Natural**



Summit UNI  
**Passion**



Summit UNI  
**Walnut**

---

## Trickle

### composition

60% WO / 20% PES / 20% PA

### abrasion

80.000 martindale

### lightfastness 6

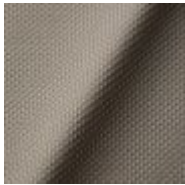
### firetest

EN1021-1/2

US. Cal. Bull. 117-2013

BS5852 part1

DIN 4102-B2



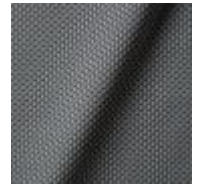
Trickle  
**Flour**



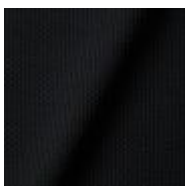
Trickle  
**Twig**



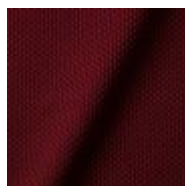
Trickle  
**Peat**



Trickle  
**Dust**



**Trickle**  
Slate



Trickle  
**Chili**



Trickle  
**Lavender**



Trickle  
**Lagoon**

m o o o i<sup>®</sup>

## Twill

### composition

72% wo, 8% pa, 20% pl

### abrasion

75.000 martindale

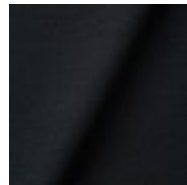
### lightfastness 5

### firetest

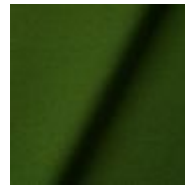
EN1021 I&2



Twill  
**Caviar**



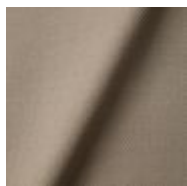
Twill  
**Graphite**



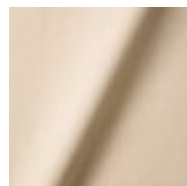
Twill  
**Grass**



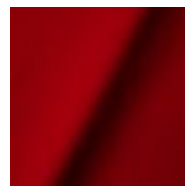
Twill  
**Grey**



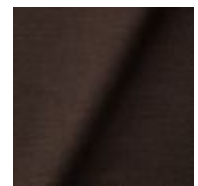
Twill  
**Linen**



Twill  
**Natural**



Twill  
**Passion**



Twill  
**Walnut**

m o o o i<sup>®</sup>

## Twill Melange

**composition**

60% WO / 20% PES / 20% PA

**abrasion**

80.000 martindale

**lightfastness 6-7**

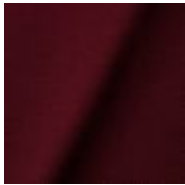
**firetest**

EN1021-1/2

US. Cal. Bull. 117-2013

BS5852 part1

DIN 4102-B2



Twill Melange  
**Chili**



Twill Melange  
**Dust**



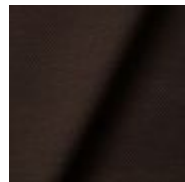
Twill Melange  
**Flour**



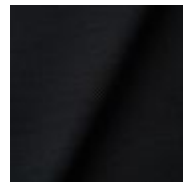
Twill Melange  
**Lagoon**



Twill Melange  
**Lavender**



Twill Melange  
**Peat**



Twill Melange  
**Slate**



Twill Melange  
**Twig**

## Vesper

### composition

10% CO, 40% L, 10% PA, 10% PL, 30% VI

### abrasion

40.000 Martindale rubs, EN ISO 12947

### lightfastness

Note 5, EN ISO 105-B02

### firetest

EN 1021-1/2

US. Cal. Bull. 117-2013

Upon request, with treatment:

BS5852 part I

BS5852 crib 5



Vesper  
**Aluminium**



Vesper  
**Brass**



Vesper  
**Bronze**



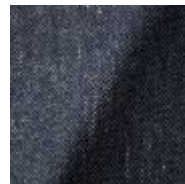
Vesper  
**Carbon**



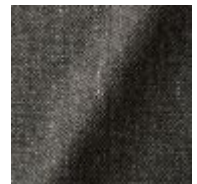
Vesper  
**Nickel**



Vesper  
**Silver**



Vesper  
**Steel**



Vesper  
**Titan**

---

## Arredo Leather

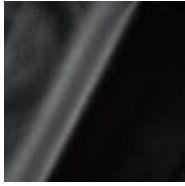
### composition

100% semi aniline leather

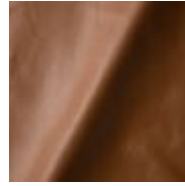
Leather is a natural product, colours may vary from hide to hide.

### firetest

EN1021 I&2



Arredo Leather  
**Black**



Arredo Leather  
**Brown**



Arredo Leather  
**White**

---

## Cervino Leather

### composition

100% aniline leather

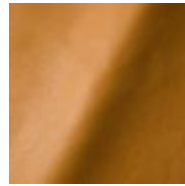
Leather is a natural product, colours may vary from hide to hide.

### firetest

EN1021 I&2



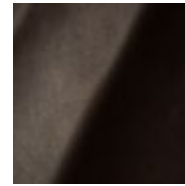
Cervino Leather  
**Anthracite**



Cervino Leather  
**Cognac**



Cervino Leather  
**Mud**



Cervino Leather  
**Pure**

---

## Kvadrat Fabrics

### Kvadrat Fabrics

Selected Moooi products can be upholstered with a collection of Kvadrat fabrics. Kvadrat designs high-quality upholstery, in an extensive range of colours and textures.

Go to our Kvadrat fabrics page for a full overview of all fabric families you can choose from.





m o o o i<sup>®</sup>

## packaging

Zliq Sofa:

H 107 cm | 42"  
W 279 cm | 110"  
D 84 cm | 33"

Colli I

With packaging:  
97,5 KG | 215 lb

Zliq 2-seater element:

H 74 cm | 29"  
W 176 cm | 69.3"  
D 64 cm | 25.2"

Colli I

With packaging:  
48 KG | 106 lb

Zliq 1-seater element:

H 74 cm | 29.1"  
W 106 cm | 41.7"  
D 64 cm | 25.2"

Colli I

With packaging:  
34 KG | 75 lb

---

## Dodo Pavone

### composition

12% CO 88% PL

### abrasion

40.000 Martindale rubs, EN ISO 12947

### lightfastness

Note 5, EN ISO 105-B02

### firetest

US. Cal. Bull. 117-2013

Upon request, with treatment:  
BS5852 part I



m o o o i<sup>®</sup>

## Bearded leopard Jacquard

### composition

77% VI / 15% PES / 7% CO / 1% PA

### abrasion

15.000 Martindale rubs, EN ISO 12947

### lightfastness

Note 4-6, EN ISO 105-B02

### firetest

EN1021-1/2

Upon request and with treatment:

BS5852 part I



---

## Blushing Sloth Melange Mohair

### composition

29% LANA / 24% LANA WM / 24% PES / 15% PA / 8% CO

### abrasion

40.000 Martindale rubs, EN ISO 12947

### lightfastness

Note 4-6, EN ISO 105-B02

m o o o i<sup>®</sup>



---

## Blushing Sloth Woolly Mohair

### composition

85% WV / 15% WM

### abrasion

15.000 Martindale rubs, EN ISO 12947

### lightfastness

Note 4-6, EN ISO 105-B02

### firetest

EN1021-1/2

BS5852 part1



**Extinct  
Animals  
Fabric  
Collection**

Blushing Sloth  
Woolly Mohair

m o o o i<sup>®</sup>

## Calligraphy Bird Jacquard

### composition

64% VI, 21% PES, 15% CO

### abrasion

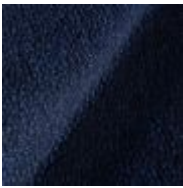
50.000 Martindale rubs, EN ISO 12947

### lightfastness

Note 4-6, EN ISO 105-B02

### firetest

Upon request, with treatment;  
BS5852 part I



Extinct Animals  
Fabric Collection  
Calligraphy Bird  
Jacquard

---

## The Silent Bison Velvet

### composition

100% CO

### abrasion

30.000 Martindale rubs, EN ISO 12947

### lightfastness

Note 4-6, EN ISO 105-B02





## The Menagerie of Extinct Animals

### composition

100% PES

### abrasion

50.000 Martindale rubs, EN ISO 12947

### lightfastness

Note 4-6, EN ISO 105-B02

### firetest

EN1021-1/2

Upon request, with treatment;

BS5852 part I

---

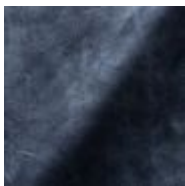
## Dwarf Rhino Buffed

### composition

100% steer

### Type

Pure aniline, nubuck finish

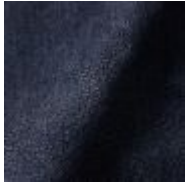


Extinct Animals  
Fabric Collection  
Dwarf Rhino  
Buffed

---

## Dwarf Rhino Crackle

m o o o i<sup>®</sup>



**Extinct  
Animals  
Fabric  
Collection**  
Dwarf Rhino  
Crackle

---

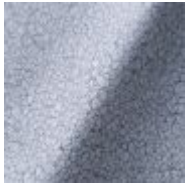
## Armoured Boar Crackle

**composition**

100% cow hide

**Type of leather**

Pure aniline, nubuck finish



---

## Armoured Boar Hairy

**composition**

100% cow skin

**lightfastness**

>3, ISO 105-B02:2004

