

m o o o i[®]



Smoke Dining Chair

by Maarten Baas

Furniture finished with fire. The beauty and character of burned wood is now captured in a long lasting material, creating the strange sensation of sitting on burnt furniture.

Designer	Maarten Baas
Year of design	2002
Material	burnt solid wood, finished with epoxy resin, fire retardant (FR) foam leather upholstery
Additional	Each chair is unique

detailing



The enchanting texture of burnt wood. Each item from the Smoke series share the unfamiliar and untamed finish that is characterized by fire. The smoke chair has a repair kit underneath the seat in case of emergencies.

colour



Black

Leather

Composition

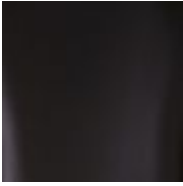
Finished cow leather th 08-10 chrome tanning
Dying trough, finished with water pigment

Leather is a natural product, colours may vary from hide to hide.

Martindale

50.000

m o o o i[®]



Black

cleaning instructions

The Smoke series of furniture should be lightly dusted regularly with a feather duster and a damp cloth. To clean the upholstery Moooi recommends using a soft damp cloth. Moooi recommends always reading the label of any cleaning product you wish to use on or near any item from the Moooi collection. For further information and cleaning assistance for this product please contact your nearest Moooi agent or dealer which can be located vis our website.

dimensions

48cm | 18.9"



57cm | 22.4"



51cm | 20.1"



106cm | 41.7"

m o o o i[®]

Dimensions: 106x48x57cm | 41.7"x18.9"x22.4" (HxWxD)

Seating height: 51cm | 20.1"