

m o o o i<sup>®</sup>



## Love Sofa

---

Have you ever fallen in love with a chair or on a sofa? Both experiences are possible, even probable while enjoying a romantic dinner for two in the Love chair or cuddling up with your sweetheart in one of the Love sofas by Marcel Wanders.

---

<b>Designer</b>	Marcel Wanders
<b>Year of design</b>	2013
<b>Material</b>	Moulded foam with metal frame for durable comfort.

---



---

## upholstery categories

COF (Client Own Fabric)

Abbracci

Bouclé/Divina Composition (Kvadrat

divina 3: 191-black, 0224-brown,

791-blue, 542-orange)

Bouclé

Jacquards

Liscio

Divina 3 & Divina Melange

Summit Uni & Summit Melange

Trickle

Twill & Twill Melange

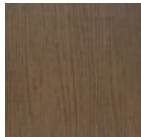
Velour

Plush

COF (Client Own Fabric)

---

## colours



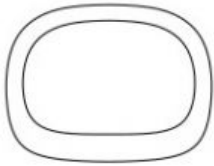
Wood Stained  
Cinnamon



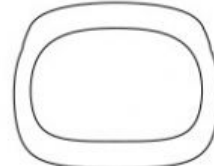
Wood Stained  
White Washed

## dimensions

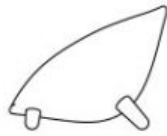
129cm | 50,8"



129cm | 50,8"



77cm | 30,3"



77cm | 30,3"

102cm | 40,2"



105cm | 41,3"

## Abbracci

### composition

100% pl

### abrasion

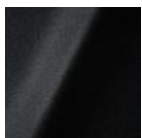
50.000 martindale

### lightfastness 4

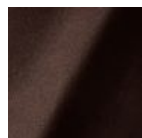
### firetest

FR BS5852 0/1

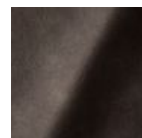
EN1021 I&2



Abbracci  
**Black**



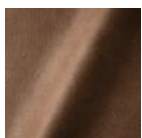
Abbracci  
**Brown**



Abbracci  
**Grey**



Abbracci  
**Oyster**



Abbracci  
**Taupe**

## Jacquard andaz

m o o o i<sup>®</sup>

**composition:**

34% cotton - 30% viscose - 24% linen - 12% polyamide

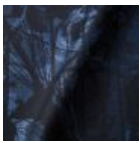
**abrasion:**

25000 martindale

**lightfastness** 4-5

**firetest:**

BS EN 1021 1&2



Jacquard  
**Andaz**

---

## Jaquard Fresco

**composition**

40% vi ,36% co,14% pl, 10% li

**abrasion**

20.000> martindale

**lightfastness** 4-5

**firetest**

EN1021 1&2



Jacquard  
**Fresco**

---

## Jacquard Old Black & Blue

**composition**

52% vi, 38% co, 10% li

**abrasion**

20.000> martindale

**lightfastness** 4-5

**firetest**

EN1021 1&2



Jacquard  
**Old Blue**



Jacquard  
**Old Black**

---

## Justo

### composition

15% CO, 35% PC, 10% PL, 40% VI

### abrasion

50.000 Martindale rubs, EN ISO 12947

### lightfastness

Note 5, EN ISO 105-B02

### fire test

EN 1021-1/2

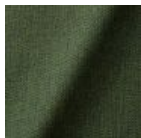
US. Cal. Bull. 117-2013

NFPA 260

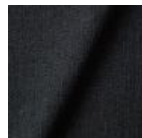
Upon request, with treatment:

BS5852 part 1

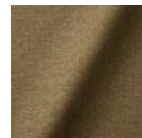
BS5852 crib 5



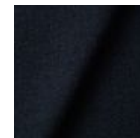
Justo  
**Alge**



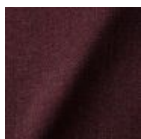
Justo  
**Bazalt**



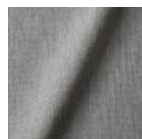
Justo  
**Bred**



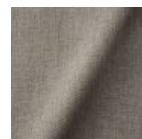
Justo  
**Flod**



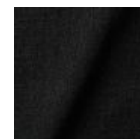
Justo  
**Hinde**



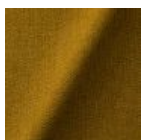
Justo  
**Lyse**



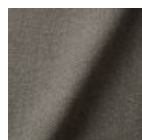
Justo  
**Muse**



Justo  
**Nat**



Justo  
**Sennep**



Justo  
**Sten**

---

## Liscio

### composition

35% WO / 35% CV / 21% CO / 9% PA

### abrasion

30.000 Martindale

### lightfastness

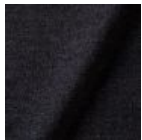
4-6

### firetest

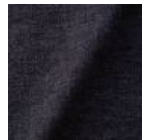
US. Cal. Bull. 117-2013

Upon request, with treatment:

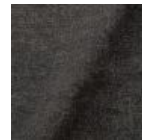
BS5852 part I



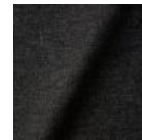
Liscio  
**Grigio Blu  
Scuro**



Liscio  
**Grigio Blu**



Liscio  
**Grigio Scuro**



Liscio  
**Muscio Scuro**



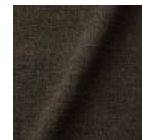
Liscio  
**Muscio**



Liscio  
**Argento**



**Liscio**  
Nebbia



Liscio  
**Pietra**



Liscio  
**Perla**



Liscio  
**Latte Scuro**



Liscio  
**Latte**

---

## Solis

### composition

2% PA 3% PC 30% PL 65% WO

### abrasion

40.000 Martindale rubs, EN ISO 12947

### lightfastness

Note 5, EN ISO 105-B02

### firetest

EN 1021-1/2

US. Cal. Bull. 117-2013

Upon request, with treatment:

BS5852 part I

BS5852 crib5

# m o o o i<sup>®</sup>



Solis  
**Crust**



Solis  
**Dawn**



Solis  
**Fog**



Solis  
**Gray**



Solis  
**Paper**



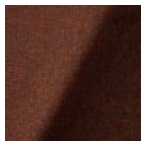
Solis  
**Rain**



Solis  
**Spencer**



Solis  
**Suit**



Solis  
**Sunset**

---

## Summit Melange

### composition

20% WO / 5% PA / 15% PES  
60% PES filling

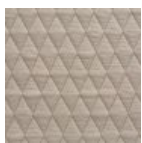
### abrasion

50.000 martindale

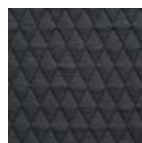
### lightfastness 6

### firetest

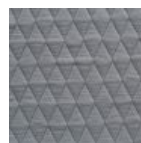
EN1021-1/2  
US. Cal. Bull. 117-2013  
BS5852 part I  
DIN 4102-B2



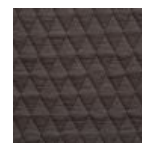
Summit Melange  
**Flour**



Summit Melange  
**Slate**



Summit Melange  
**Dust**



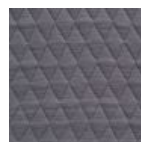
Summit Melange  
**Peat**



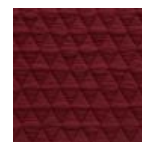
Summit Melange  
**Twig**



Summit Melange  
**Lagoon**



Summit Melange  
**Lavender**



Summit Melange  
**Chili**

## Summit UNI

**composition**

22% wo, 2% pa, 14% pl, 62% pl filling

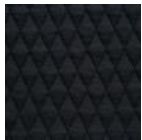
**abrasion**

50.000 martindale

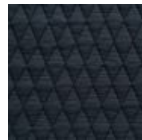
**lightfastness 5**

**firetest**

EN1021 I&2



Summit UNI  
**Caviar**



Summit UNI  
**Graphite**



Summit UNI  
**Grass**



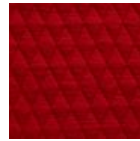
Summit UNI  
**Grey**



Summit UNI  
**Linen**



Summit UNI  
**Natural**



Summit UNI  
**Passion**



Summit UNI  
**Walnut**

## Trickle

**composition**

60% WO / 20% PES / 20% PA

**abrasion**

80.000 martindale

**lightfastness 6**

**firetest**

EN1021-I/2

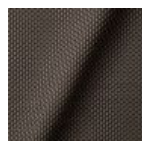
US. Cal. Bull. 117-2013

BS5852 part I

DIN 4102-B2



Trickle  
**Flour**



Trickle  
**Twig**



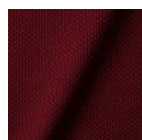
Trickle  
**Peat**



Trickle  
**Dust**



**Trickle**  
Slate



Trickle  
**Chili**



Trickle  
**Lavender**



Trickle  
**Lagoon**



## Twill

**composition**

72% wo, 8% pa, 20% pl

**abrasion**

75.000 martindale

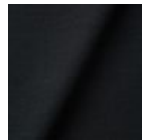
**lightfastness 5**

**firetest**

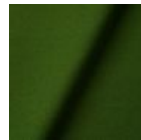
EN1021 I&2



Twill  
**Caviar**



Twill  
**Graphite**



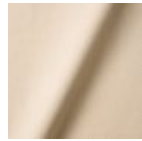
Twill  
**Grass**



Twill  
**Grey**



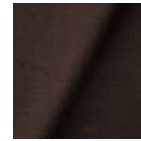
Twill  
**Linen**



Twill  
**Natural**



Twill  
**Passion**



Twill  
**Walnut**

## Twill Melange

**composition**

60% WO / 20% PES / 20% PA

**abrasion**

80.000 martindale

**lightfastness 6-7**

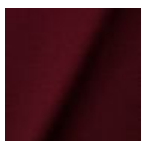
**firetest**

EN1021-I/2

US. Cal. Bull. 117-2013

BS5852 part I

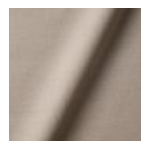
DIN 4102-B2



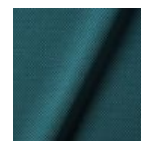
Twill Melange  
**Chili**



Twill Melange  
**Dust**



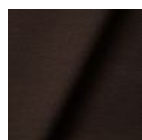
Twill Melange  
**Flour**



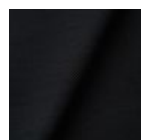
Twill Melange  
**Lagoon**



Twill Melange  
**Lavender**



Twill Melange  
**Peat**



Twill Melange  
**Slate**



Twill Melange  
**Twig**

## Velour

**composition**

77% wo, 8% pa, 15% pl

**abrasion**

100.000 martindale

**lightfastness 7**

**firetest**

FR BS5852 0/1

EN1021 I&2



Velour  
**Coral**



Velour  
**Stone**



Velour  
**Moss**

## Vesper

**composition**

10% CO, 40% L, 10% PA, 10% PL, 30% VI

**abrasion**

40.000 Martindale rubs, EN ISO 12947

**lightfastness**

Note 5, EN ISO 105-B02

**firetest**

EN 1021-1/2

US. Cal. Bull. 117-2013

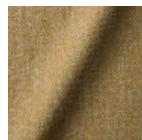
Upon request, with treatment:

BS5852 part I

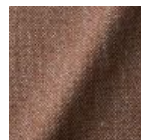
BS5852 crib5



Vesper  
**Aluminium**



Vesper  
**Brass**



Vesper  
**Bronze**



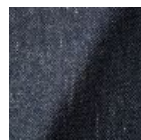
Vesper  
**Carbon**



Vesper  
**Nickel**



Vesper  
**Silver**



Vesper  
**Steel**



Vesper  
**Titan**

---

## Plush

**composition**

85% PC / 15% PL

**abrasion**

NA

**lightfastness** NA

**firetest**

NA



white

---

## Kvadrat Fabrics

### Kvadrat Fabrics

Selected Moooi products can be upholstered with a collection of Kvadrat fabrics. Kvadrat designs high-quality upholstery, in an extensive range of colours and textures.

Go to our Kvadrat fabrics page for a full overview of all fabric families you can choose from.



---

## Dodo Pavone

**composition**

12% CO 88% PL

**abrasion**

40.000 Martindale rubs, EN ISO 12947

**lightfastness**

Note 5, EN ISO 105-B02

**firetest**

US. Cal. Bull. 117-2013

Upon request, with treatment:

BS5852 part I



---

## Bearded leopard Jacquard

### composition

77% VI / 15% PES / 7% CO / 1% PA

### abrasion

15.000 Martindale rubs, EN ISO 12947

### lightfastness

Note 4-6, EN ISO 105-B02

### firetest

EN1021-1/2

Upon request and with treatment:

BS5852 part I



---

## Blushing Sloth Melange Mohair

### composition

29% LANA / 24% LANA WM / 24% PES / 15% PA / 8% CO

### abrasion

40.000 Martindale rubs, EN ISO 12947

### lightfastness

Note 4-6, EN ISO 105-B02



---

## Blushing Sloth Woolly Mohair

**composition**

85% WV / 15% WM

**abrasion**

15.000 Martindale rubs, EN ISO 12947

**lightfastness**

Note 4-6, EN ISO 105-B02

**firetest**

EN 1021-1/2

BS5852 part 1



**Extinct  
Animals  
Fabric  
Collection**

Blushing Sloth  
Woolly Mohair

---

## Calligraphy Bird Jacquard

**composition**

64% VI, 21% PES, 15% CO

**abrasion**

50.000 Martindale rubs, EN ISO 12947

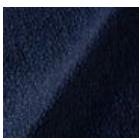
**lightfastness**

Note 4-6, EN ISO 105-B02

**firetest**

Upon request, with treatment;

BS5852 part 1



Extinct Animals  
Fabric Collection  
Calligraphy Bird  
Jacquard

---

## The Silent Bison Velvet

**composition**

100% CO

**abrasion**

30.000 Martindale rubs, EN ISO 12947

**lightfastness**

Note 4-6, EN ISO 105-B02



---

## The Menagerie of Extinct Animals

**composition**

100% PES

**abrasion**

50.000 Martindale rubs, EN ISO 12947

**lightfastness**

Note 4-6, EN ISO 105-B02

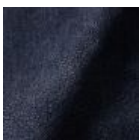
**firetest**

EN1021-1/2

Upon request, with treatment;  
BS5852 part 1

---

## Dwarf Rhino Crackle



**Extinct  
Animals  
Fabric  
Collection**  
Dwarf Rhino  
Crackle

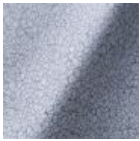
## Armoured Boar Crackle

**composition**

100% cow hide

**Type of leather**

Pure aniline, nubuck finish



---

## Armoured Boar Hairy

**composition**

100% cow skin

**lightfastness**

>3, ISO 105-B02:2004

