

m o o o i[®]



Nest Chair

by Marcel Wanders

The Nest Chair's linear, clear metal structure lifts the plumpest and softest cushions from the floor, creating a comfy, elevated nest for one or more people.

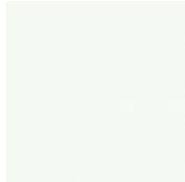
Designer	Marcel Wanders
Year of design	2013
Material	KTL and powdercoated steelframe (suitable for outdoor use); Mixed foam, feather & fiber flock filling
Additional	Nest Chair pillows are connected by zippers. All covers can be removed for cleaning.



Nest Frame



Grey silver
Grey silver (fine
texture mettalic
coating)



Satin white
Satin white 9016 (high
gloss coating)



Black

cleaning instructions

Moooi recommends using a good furniture polish and a soft cloth. Apply generously in layers to the surface and use the cloth to shine. Do not use abraasive fabrics, gently remove tough stains with warm water and a trusted multi-surface cleaner.

m o o o i[®]

dimensions

110cm | 43,3"



58cm | 22,8"

55cm | 21,7"

88cm | 34,6"

81cm | 31,9"



48cm | 18,9"



Macchedil, Grezzo

composition

47% co, 20% vi, 18% pi, 8% li, 5% pc, 2% af

abrasion

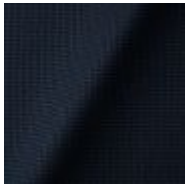
18.000 martindale

lightfastness 4

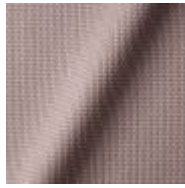
firetest

EN1021 I&2

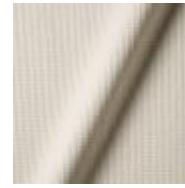
m o o o i[®]



Macchedil Grezzo
Black indigo



Macchedil Grezzo
Pinkish



Macchedil Grezzo
Off white



Macchedil Grezzo
Light brown



Macchedil Grezzo
Grey grey



Macchedil Grezzo
Anthracite



Macchedil Grezzo
Cappuccino



Macchedil Grezzo
Deepblue

Macchedil, Sottile

composition

49% vi, 24% pl, 21% li, 6% co

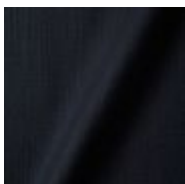
abrasion

30.000 martindale

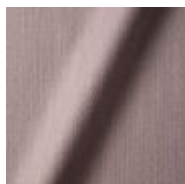
lightfastness 4

firetest

EN1021 I&2



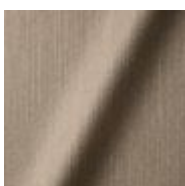
Macchedil Sottile
Black indigo



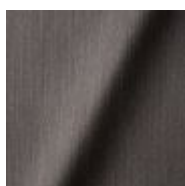
Macchedil Sottile
Pinkish



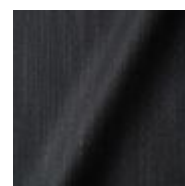
Macchedil Sottile
Off white



Macchedil Sottile
Light brown



Macchedil Sottile
Grey grey



Macchedil Sottile
Anthracite

m o o o i[®]



Macchedil Sottile
Cappuccino



Macchedil Sottile
Deep blue

Abbracci

composition

100% pl

abrasion

50.000 martindale

lightfastness 4

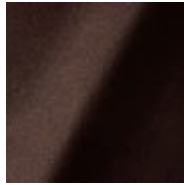
firetest

FR BS5852 0/1

EN1021 1&2



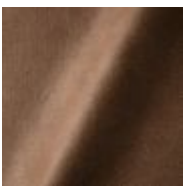
Abbracci
Black



Abbracci
Brown



Abbracci
Grey



Abbracci
Taupe

m o o o i[®]

Alfresco

composition

100% Polyester

outdoor suitable

Alfresco cover is suitable for outdoor use, outdoor pillows are available on request.

abrasion

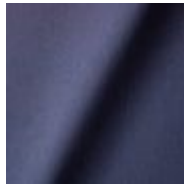
50.000 martindale

lightfastness 5

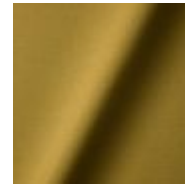
Pilling 4



Alfresco
Pirbright



Alfresco
Rock



Alfresco
Ochre



Alfresco
Copper

Oray

composition

8% co, 38% vi, 15% pl, 39% li

abrasion

30.000 martindale

lightfastness 4

firetest

FR BS5852 0/1

EN 1021 1&2

m o o o i[®]



Oray
Cream



Oray
Sand



Oray
Rock



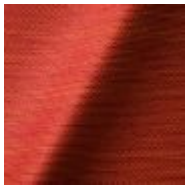
Oray
Gravel



Oray
Dark Gull



Oray
Copper



Oray
Flamboyant



Oray
Oil



Oray
Aqua



Oray
Ocean



Oray
Metal



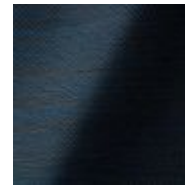
Oray
Griffin



Oray
Chestnut



Oray
Dark



Oray
Indigo

m o o o i[®]

Solis

composition

2% PA 3% PC 30% PL 65% WO

abrasion

40.000 Martindale rubs, EN ISO 12947

lightfastness

Note 5, EN ISO 105-B02

firetest

EN 1021-1/2

US. Cal. Bull. 117-2013

Upon request, with treatment:

BS5852 part 1

BS5852 crib 5



Solis
Crust



Solis
Dawn



Solis
Fog



Solis
Paper



Solis
Rain



Solis
Spencer



Solis
Sunset

Flower Bits

m o o o i[®]



One Minute



Bouclé

composition

43% co, 28% pan, 14% pa, 12% vi, 3% pl

abrasion

20.000 > martindale

lightfastness 4

firetest

EN1021 I&2



Bouclé
Black white



Bouclé
Rainbow



Bouclé
Brown

m o o o i[®]

Jacquard andaz

composition:

34% cotton - 30% viscose - 24% linen - 12% polyamide

abrasion:

25000 martindale

lightfastness 4-5

firetest:

BS EN 1021 1&2



Jacquard
Andaz

Jaquard Fresco

composition

40% vi ,36% co,14% pl, 10% li

abrasion

20.000> martindale

lightfastness 4-5

firetest

EN1021 1&2



Jaquard
Fresco

m o o o i[®]

Jacquard Old Black & Blue

composition

52% vi, 38% co, 10% li

abrasion

20.000> martindale

lightfastness 4-5

firetest

EN1021 1&2



Jacquard
Old Blue



Jacquard
Old Black

Justo

composition

15% CO, 35% PC, 10% PL, 40% VI

abrasion

50.000 Martindale rubs, EN ISO 12947

lightfastness

Note 5, EN ISO 105-B02

fire test

EN 1021-1/2

US. Cal. Bull. 117-2013

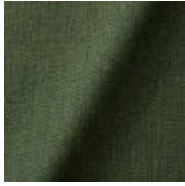
NFPA 260

Upon request, with treatment:

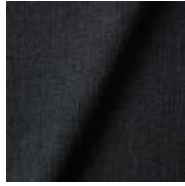
BS5852 part I

BS5852 crib5

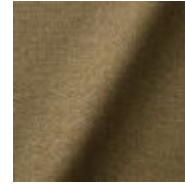
m o o o i®



Justo
Alge



Justo
Bazalt



Justo
Bred



Justo
Hinde



Justo
Lyse



Justo
Muse



Justo
Sennep



Justo
Sten

Liscio

composition

35% WO / 35% CV / 21% CO / 9% PA

abrasion

30.000 Martindale

lightfastness

4-6

firetest

US. Cal. Bull. 117-2013

Upon request, with treatment:

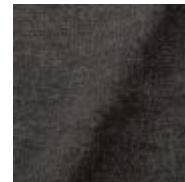
BS5852 part I



Liscio
Grigio Blu Scuro



Liscio
Grigio Blu



Liscio
Grigio Scuro

m o o o i[®]



Liscio
Muscio



Liscio
Argento



Liscio
Nebbia



Liscio
Perla



Liscio
Latte Scuro



Liscio
Latte

Softlinen

composition

100% Linen

abrasion

25.000 martindale

lightfastness 6

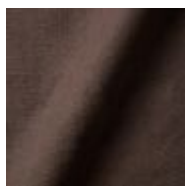
firetest

FR BS5852 0/1

EN1021 1&2



Softlinen
Beige



Softlinen
Brown

m o o o i[®]

Trickle

composition

60% WO / 20% PES / 20% PA

abrasion

80.000 martindale

lightfastness 6

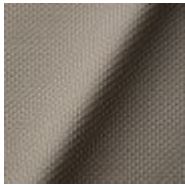
firetest

EN1021-1/2

US. Cal. Bull. 117-2013

BS5852 part1

DIN 4102-B2



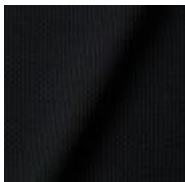
Trickle
Flour



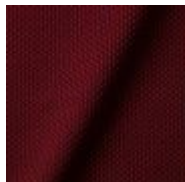
Trickle
Twig



Trickle
Peat



Trickle
Slate



Trickle
Chili



Trickle
Lavender

m o o o i[®]

Twill

composition

72% wo, 8% pa, 20% pl

abrasion

75.000 martindale

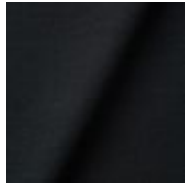
lightfastness 5

firetest

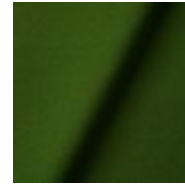
EN1021 I&2



Twill
Caviar



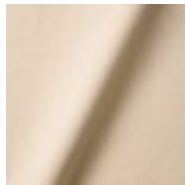
Twill
Graphite



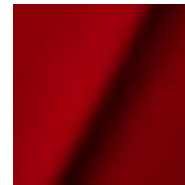
Twill
Grass



Twill
Linen



Twill
Natural



Twill
Passion

Twill Melange

composition

60% WO / 20% PES / 20% PA

abrasion

80.000 martindale

lightfastness 6-7

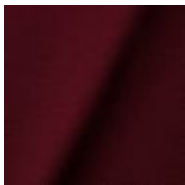
firetest

EN1021-1/2

US. Cal. Bull. 117-2013

BS5852 part I

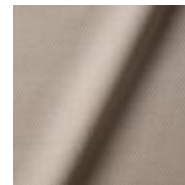
DIN 4102-B2



Twill Melange
Chili



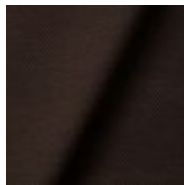
Twill Melange
Dust



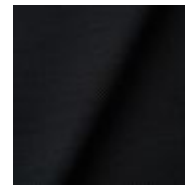
Twill Melange
Flour



Twill Melange
Lavender



Twill Melange
Peat



Twill Melange
Slate

m o o o i[®]

Vesper

composition

10% CO, 40% L, 10% PA, 10% PL, 30% VI

abrasion

40.000 Martindale rubs, EN ISO 12947

lightfastness

Note 5, EN ISO 105-B02

firetest

EN 1021-1/2

US. Cal. Bull. 117-2013

Upon request, with treatment:

BS5852 part 1

BS5852 crib 5



Vesper
Aluminium



Vesper
Brass



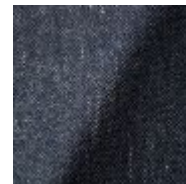
Vesper
Bronze



Vesper
Nickel



Vesper
Silver



Vesper
Steel

m o o o i[®]

Kvadrat Fabrics

Kvadrat Fabrics

Selected Moooi products can be upholstered with a collection of Kvadrat fabrics. Kvadrat designs high-quality upholstery, in an extensive range of colours and textures.

Go to our Kvadrat fabrics page for a full overview of all fabric families you can choose from.



Dodo Pavone Jacquard

composition

12% CO 88% PL

abrasion

40.000 Martindale rubs, EN ISO 12947

lightfastness

Note 5, EN ISO 105-B02

firetest

US. Cal. Bull. 117-2013

Upon request, with treatment:

BS5852 part I



**Extinct Animals
Fabric Collection**
Dodo Pavone Jacquard



Bearded Leopard Jacquard

composition

77% VI / 15% PES / 7% CO / 1% PA

abrasion

15.000 Martindale rubs, EN ISO 12947

lightfastness

Note 4-6, EN ISO 105-B02

firetest

EN1021-1/2

Upon request and with treatment:

BS5852 part I



**Extinct Animals
Fabric Collection**
Bearded Leopard
Jacquard

Blushing Sloth Melange Mohair

composition

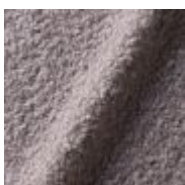
29% LANA / 24% LANA WM / 24% PES / 15% PA / 8% CO

abrasion

40.000 Martindale rubs, EN ISO 12947

lightfastness

Note 4-6, EN ISO 105-B02



**Extinct Animals
Fabric Collection**
Blushing Sloth Melange
Mohair

Blushing Sloth Woolly Mohair

composition

85% WV / 15% WM

abrasion

15.000 Martindale rubs, EN ISO 12947

lightfastness

Note 4-6, EN ISO 105-B02

firetest

EN1021-1/2

BS5852 part I



**Extinct Animals
Fabric Collection**
Blushing Sloth Woolly
Mohair

Calligraphy Bird Jacquard

composition

64% VI, 21% PES, 15% CO

abrasion

50.000 Martindale rubs, EN ISO 12947

lightfastness

Note 4-6, EN ISO 105-B02

firetest

Upon request, with treatment;
BS5852 part I

m o o o i[®]



Extinct Animals Fabric
Collection
Calligraphy Bird
Jacquard

The Silent Bison Velvet

composition

100% CO

abrasion

30.000 Martindale rubs, EN ISO 12947

lightfastness

Note 4-6, EN ISO 105-B02



Extinct Animals Fabric
Collection
The Silent Bison Velvet

The Menagerie of Extinct Animals

composition

100% PES

abrasion

50.000 Martindale rubs, EN ISO 12947

lightfastness

Note 4-6, EN ISO 105-B02

firetest

EN1021-1/2

Upon request, with treatment;

BS5852 part 1



Extinct Animals Fabric Collection

The Menagerie of Extinct Animals