

m o o o i[®]



Bart Swivel

by Moooi Works | Bart Schilder

One of the members of the Bart Family collection couldn't quite sit still and developed a look around, comfortably and in style.

Designer	Moooi Works
Year of design	2014
Material	Wooden frame covered in foam and dacron, the seat cushion is made in foam.
Additional	Swivel your Bart armchair around & enjoy another point of view!



technical

The Bart Swivel is constructed from a wood frame covered in foam and dacron, the seat cushion is made in foam and removable.

Bart Swivel is produced with removable covers for the removable seat cushion and back cushion (please check per category).

cleaning instructions

Moooi recommends using a good furniture polish and a soft cloth. Apply generously in layers to the surface and use the cloth to shine. Do not use abrasive fabrics, gently remove tough stains with warm water and a trusted multi-surface cleaner.

packaging

H 63 cm | 24,8"

W 102 cm | 40,2"

D 104 cm | 40,9"

Colli 1/1

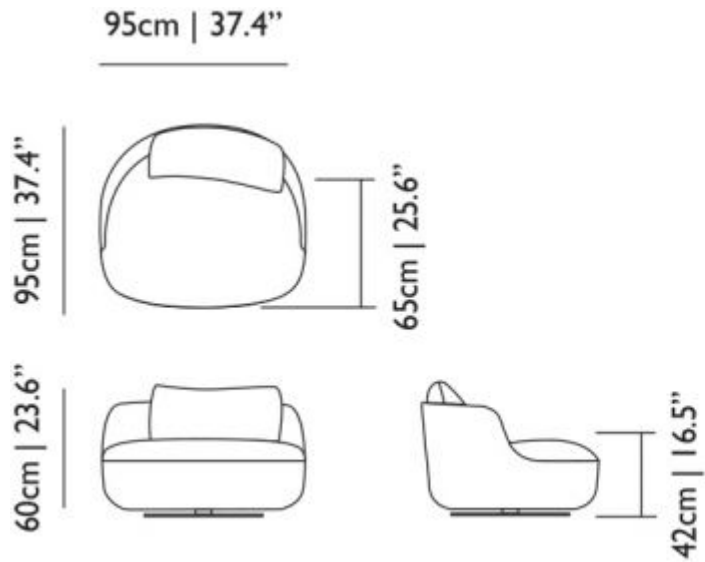
Product weight:

With packaging:

39 KG | 86 lb

m o o o i[®]

dimensions



Abbracci

composition

100% pl

abrasion

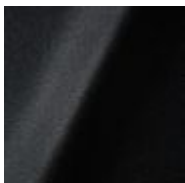
50.000 martindale

lightfastness 4

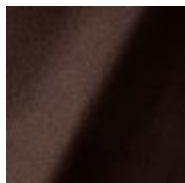
firetest

FR BS5852 0/1

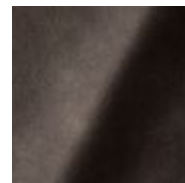
EN1021 I&2



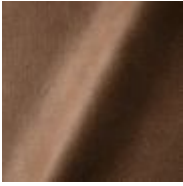
Abbracci
Black



Abbracci
Brown



Abbracci
Grey



Abbracci
Taupe

Justo

composition

15% CO, 35% PC, 10% PL, 40% VI

abrasion

50.000 Martindale rubs, EN ISO 12947

lightfastness

Note 5, EN ISO 105-B02

fire test

EN 1021-1/2

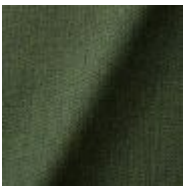
US. Cal. Bull. 117-2013

NFPA 260

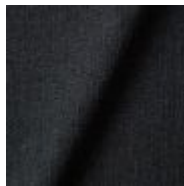
Upon request, with treatment:

BS5852 part I

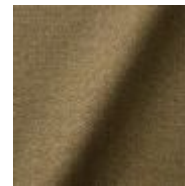
BS5852 crib5



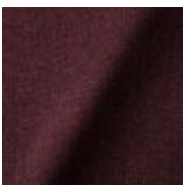
Justo
Alge



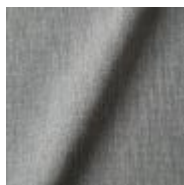
Justo
Bazalt



Justo
Bred



Justo
Hinde



Justo
Lyse



Justo
Muse



Justo
Sennep



Justo
Sten

Liscio

composition

35% WO / 35% CV / 21% CO / 9% PA

abrasion

30.000 Martindale

lightfastness

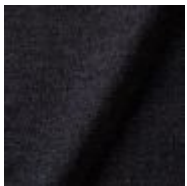
4-6

firetest

US. Cal. Bull. 117-2013

Upon request, with treatment:

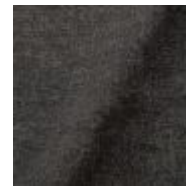
BS5852 part I



Liscio
Grigio Blu Scuro



Liscio
Grigio Blu



Liscio
Grigio Scuro



Liscio
Muscio



Liscio
Argento



Liscio
Nebbia



Liscio
Perla



Liscio
Latte Scuro



Liscio
Latte

m o o o i[®]

Solis

composition

2% PA 3% PC 30% PL 65% WO

abrasion

40.000 Martindale rubs, EN ISO 12947

lightfastness

Note 5, EN ISO 105-B02

firetest

EN 1021-1/2

US. Cal. Bull. 117-2013

Upon request, with treatment:

BS5852 part 1

BS5852 crib 5



Solis
Crust



Solis
Dawn



Solis
Fog



Solis
Paper



Solis
Rain



Solis
Spencer



Solis
Sunset



Summit Melange

composition

20% WO / 5% PA / 15% PES
60% PES filling

abrasion

50.000 martindale

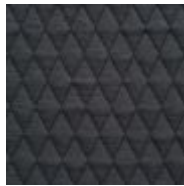
lightfastness 6

firetest

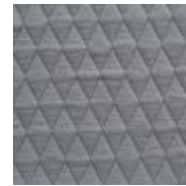
EN1021-1/2
US. Cal. Bull. 117-2013
BS5852 part I
DIN 4102-B2



Summit Melange
Flour



Summit Melange
Slate



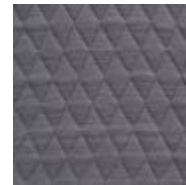
Summit Melange
Dust



Summit Melange
Twig



Summit Melange
Lagoon



Summit Melange
Lavender

Summit UNI

composition

22% wo, 2% pa, 14% pl, 62% pl filling

abrasion

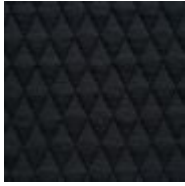
50.000 martindale

lightfastness 5

firetest

EN1021 I&2

m o o o i[®]



Summit UNI
Caviar



Summit UNI
Graphite



Summit UNI
Grass



Summit UNI
Linen



Summit UNI
Natural



Summit UNI
Passion

Trickle

composition

60% WO / 20% PES / 20% PA

abrasion

80.000 martindale

lightfastness 6

firetest

EN1021-1/2

US. Cal. Bull. 117-2013

BS5852 part I

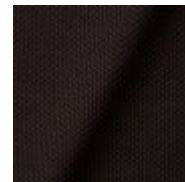
DIN 4102-B2



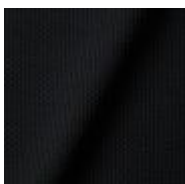
Trickle
Flour



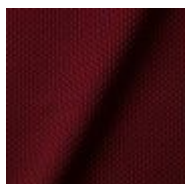
Trickle
Twig



Trickle
Peat



Trickle
Slate



Trickle
Chili



Trickle
Lavender

Twill

composition

72% wo, 8% pa, 20% pl

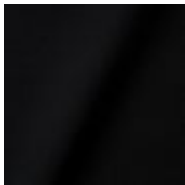
abrasion

75.000 martindale

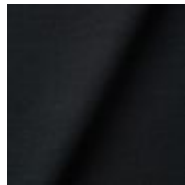
lightfastness 5

firetest

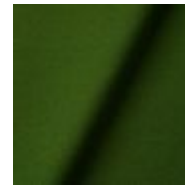
EN1021 I&2



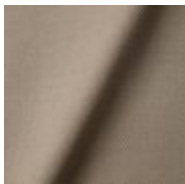
Twill
Caviar



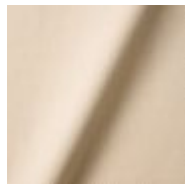
Twill
Graphite



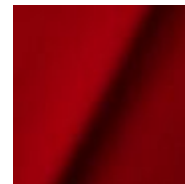
Twill
Grass



Twill
Linen



Twill
Natural



Twill
Passion

m o o o i[®]

Twill Melange

composition

60% WO / 20% PES / 20% PA

abrasion

80.000 martindale

lightfastness 6-7

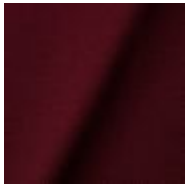
firetest

EN1021-1/2

US. Cal. Bull. 117-2013

BS5852 part1

DIN 4102-B2



Twill Melange
Chili



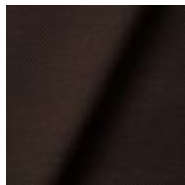
Twill Melange
Dust



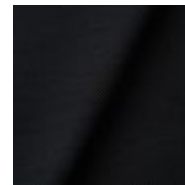
Twill Melange
Flour



Twill Melange
Lavender



Twill Melange
Peat



Twill Melange
Slate

Twill Summit Uni Composition

composition

Twill: 72% wo, 8% pa, 20% pl

Summit UNI: 22% wo, 2% pa, 14% pl, 62% pl filling

abrasion

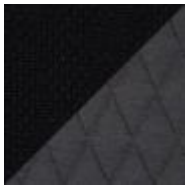
Twill: 75.000 martindale

Summit Uni: 50.000 martindale

lightfastness 5

firetest

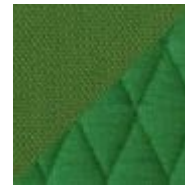
EN1021 I&2



Caviar



Graphite



Grass



Linen



Natural



Passion

Velour

composition

77% wo, 8% pa, 15% pl

abrasion

100.000 martindale

lightfastness 7

firetest

FR BS5852 0/I

EN1021 I&2

m o o o i[®]



Velour
Coral



Velour
Stone



Velour
Moss

Vesper

composition

10% CO, 40% L, 10% PA, 10% PL, 30% VI

abrasion

40.000 Martindale rubs, EN ISO 12947

lightfastness

Note 5, EN ISO 105-B02

firetest

EN 1021-1/2

US. Cal. Bull. 117-2013

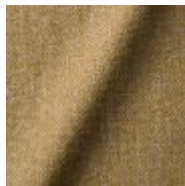
Upon request, with treatment:

BS5852 part I

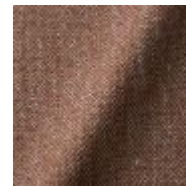
BS5852 crib 5



Vesper
Aluminium



Vesper
Brass



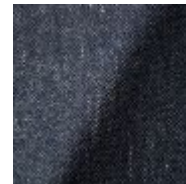
Vesper
Bronze



Vesper
Nickel



Vesper
Silver



Vesper
Steel

Arredo Leather

composition

100% semi aniline leather

Leather is a natural product, colours may vary from hide to hide.

firetest

EN1021 I&2



Arredo Leather
Black



Arredo Leather
Brown



Arredo Leather
White

Cervino Leather

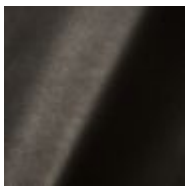
composition

100% aniline leather

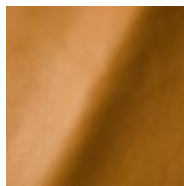
Leather is a natural product, colours may vary from hide to hide.

firetest

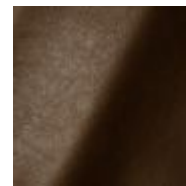
EN1021 I&2



Cervino Leather
Anthracite



Cervino Leather
Cognac



Cervino Leather
Mud

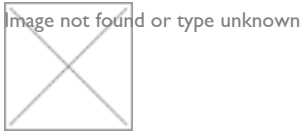


Kvadrat Fabrics

Kvadrat Fabrics

Selected Moooi products can be upholstered with a collection of Kvadrat fabrics. Kvadrat designs high-quality upholstery, in an extensive range of colours and textures.

Go to our Kvadrat fabrics page for a full overview of all fabric families you can choose from.



Dodo Pavone Jacquard

composition

12% CO 88% PL

abrasion

40.000 Martindale rubs, EN ISO 12947

lightfastness

Note 5, EN ISO 105-B02

firetest

US. Cal. Bull. 117-2013

Upon request, with treatment:

BS5852 part I



**Extinct Animals
Fabric Collection**
Dodo Pavone Jacquard



Bearded Leopard Jacquard

composition

77% VI / 15% PES / 7% CO / 1% PA

abrasion

15.000 Martindale rubs, EN ISO 12947

lightfastness

Note 4-6, EN ISO 105-B02

firetest

EN1021-1/2

Upon request and with treatment:

BS5852 part I



**Extinct Animals
Fabric Collection**
Bearded Leopard
Jacquard

Blushing Sloth Melange Mohair

composition

29% LANA / 24% LANA WM / 24% PES / 15% PA / 8% CO

abrasion

40.000 Martindale rubs, EN ISO 12947

lightfastness

Note 4-6, EN ISO 105-B02



**Extinct Animals
Fabric Collection**
Blushing Sloth Melange
Mohair

Blushing Sloth Woolly Mohair

composition

85% WV / 15% WM

abrasion

15.000 Martindale rubs, EN ISO 12947

lightfastness

Note 4-6, EN ISO 105-B02

firetest

EN1021-1/2

BS5852 part I



**Extinct Animals
Fabric Collection**
Blushing Sloth Woolly
Mohair

Calligraphy Bird Jacquard

composition

64% VI, 21% PES, 15% CO

abrasion

50.000 Martindale rubs, EN ISO 12947

lightfastness

Note 4-6, EN ISO 105-B02

firetest

Upon request, with treatment;
BS5852 part I

m o o o i[®]



Extinct Animals Fabric
Collection
Calligraphy Bird
Jacquard

The Silent Bison Velvet

composition

100% CO

abrasion

30.000 Martindale rubs, EN ISO 12947

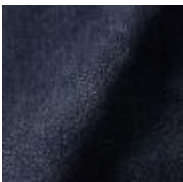
lightfastness

Note 4-6, EN ISO 105-B02



Extinct Animals Fabric
Collection
The Silent Bison Velvet

Dwarf Rhino Crackle



**Extinct Animals
Fabric Collection**
Dwarf Rhino Crackle

m o o o i[®]

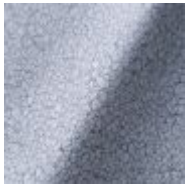
Armoured Boar Crackle

composition

100% cow hide

Type of leather

Pure aniline, nubuck finish



**Extinct Animals
Fabric Collection**
Armoured Boar Crackle

Armoured Boar Hairy

composition

100% cow skin

lightfastness

>3, ISO 105-B02:2004



Extinct Animals Fabric Collection
Armoured Boar Hairy