

m o o o i[®]



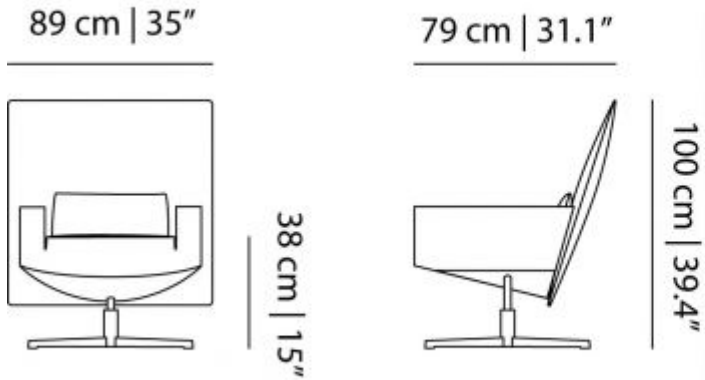
Jackson Chair

by Marcel Wanders

A grand backrest of embroidered and black leather to recline on and swivel whilst sitting comfortably.

Designer	Marcel Wanders
Year of design	2016
Material	Steel, HR foam, Leather
Additional	Jackson Footstool can be ordered separately.

dimensions



Jackson chair & footstool packaging

Jackson Chair

H 100 | 39.4"

W 89 | 35"

D 107 | 42.1"

Jackson Footstool

H 40 | 15.7"

W 58 | 22.8"

D 58 | 22.8"

m o o o i[®]

Signature leather

thickness

1.0 – 1.2 mm

origin

European rawhide, typically from Italy, Germany, Austria, Switzerland and Scandinavia

surface

matt, soft with subtle visible texture

finish

light surface protection



Macchedil, Grezzo

composition

47% co, 20% vi, 18% pi, 8% li, 5% pc, 2% af

abrasion

18.000 martindale

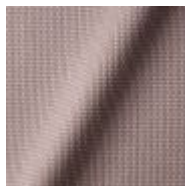
lightfastness 4

firetest

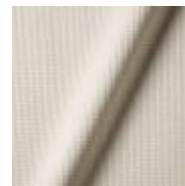
EN1021 I&2



Macchedil Grezzo
Black indigo



Macchedil Grezzo
Pinkish



Macchedil Grezzo
Off white

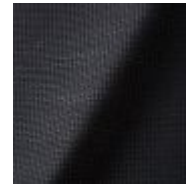
m o o o i[®]



Macchedil Grezzo
Light brown



Macchedil Grezzo
Grey grey



Macchedil Grezzo
Anthracite



Macchedil Grezzo
Cappuccino



Macchedil Grezzo
Deepblue

Macchedil, Sottile

composition

49% vi, 24% pl, 21% li, 6% co

abrasion

30.000 martindale

lightfastness 4

firetest

EN1021 I&2



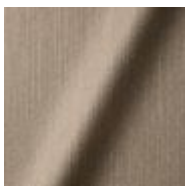
Macchedil Sottile
Black indigo



Macchedil Sottile
Pinkish



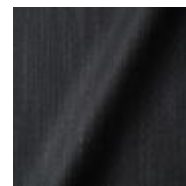
Macchedil Sottile
Off white



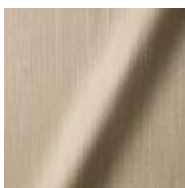
Macchedil Sottile
Light brown



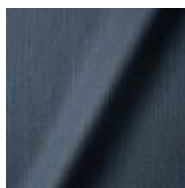
Macchedil Sottile
Grey grey



Macchedil Sottile
Anthracite



Macchedil Sottile
Cappuccino



Macchedil Sottile
Deep blue

Abbracci

composition

100% pl

abrasion

50.000 martindale

lightfastness 4

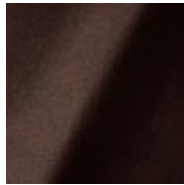
firetest

FR BS5852 0/1

EN1021 I&2



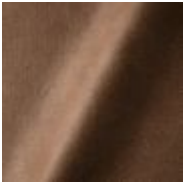
Abbracci
Black



Abbracci
Brown



Abbracci
Grey



Abbracci
Taupe

Oray

composition

8% co, 38% vi, 15% pl, 39% li

abrasion

30.000 martindale

lightfastness 4

firetest

FR BS5852 0/1

EN 1021 I&2

m o o o i[®]



Oray
Cream



Oray
Sand



Oray
Rock



Oray
Gravel



Oray
Dark Gull



Oray
Copper



Oray
Flamboyant



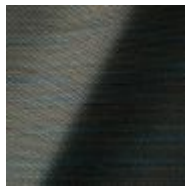
Oray
Oil



Oray
Aqua



Oray
Ocean



Oray
Metal



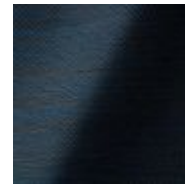
Oray
Griffin



Oray
Chestnut



Oray
Dark



Oray
Indigo

m o o o i[®]

Solis

composition

2% PA 3% PC 30% PL 65% WO

abrasion

40.000 Martindale rubs, EN ISO 12947

lightfastness

Note 5, EN ISO 105-B02

firetest

EN 1021-1/2

US. Cal. Bull. 117-2013

Upon request, with treatment:

BS5852 part 1

BS5852 crib 5



Solis
Crust



Solis
Dawn



Solis
Fog



Solis
Paper



Solis
Rain



Solis
Spencer



Solis
Sunset

m o o o i[®]

Bouclé

composition

43% co, 28% pan, 14% pa, 12% vi, 3% pl

abrasion

20.000> martindale

lightfastness 4

firetest

EN1021 I&2



Bouclé
Black white



Bouclé
Rainbow



Bouclé
Brown

Jacquard andaz

composition:

34% cotton - 30% viscose - 24% linen - 12% polyamide

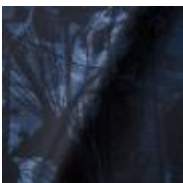
abrasion:

25000 martindale

lightfastness 4-5

firetest:

BS EN 1021 I&2



Jacquard
Andaz

m o o o i[®]

Jaquard Fresco

composition

40% vi ,36% co, 14% pl, 10% li

abrasion

20.000> martindale

lightfastness 4-5

firetest

EN1021 I&2



Jaquard
Fresco

Jacquard Old Black & Blue

composition

52% vi, 38% co, 10% li

abrasion

20.000> martindale

lightfastness 4-5

firetest

EN1021 I&2



Jaquard
Old Blue



Jaquard
Old Black

Justo

composition

15% CO, 35% PC, 10% PL, 40% VI

abrasion

50.000 Martindale rubs, EN ISO 12947

lightfastness

Note 5, EN ISO 105-B02

fire test

EN 1021-1/2

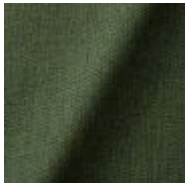
US. Cal. Bull. 117-2013

NFPA 260

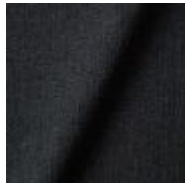
Upon request, with treatment:

BS5852 part I

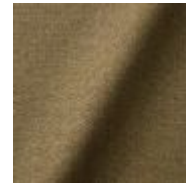
BS5852 crib 5



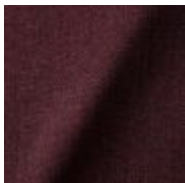
Justo
Alge



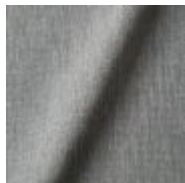
Justo
Bazalt



Justo
Bred



Justo
Hinde



Justo
Lyse



Justo
Muse



Justo
Sennep



Justo
Sten

m o o o i[®]

Liscio

composition

35% WO / 35% CV / 21% CO / 9% PA

abrasion

30.000 Martindale

lightfastness

4-6

firetest

US. Cal. Bull. 117-2013

Upon request, with treatment:

BS5852 part I



Liscio
Grigio Blu Scuro



Liscio
Grigio Blu



Liscio
Grigio Scuro



Liscio
Muscio



Liscio
Argento



Liscio
Nebbia



Liscio
Perla



Liscio
Latte Scuro



Liscio
Latte

m o o o i[®]

Vesper

composition

10% CO, 40% L, 10% PA, 10% PL, 30% VI

abrasion

40.000 Martindale rubs, EN ISO 12947

lightfastness

Note 5, EN ISO 105-B02

firetest

EN 1021-1/2

US. Cal. Bull. 117-2013

Upon request, with treatment:

BS5852 part 1

BS5852 crib 5



Vesper
Aluminium



Vesper
Brass



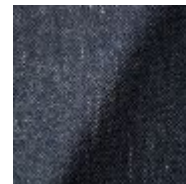
Vesper
Bronze



Vesper
Nickel



Vesper
Silver



Vesper
Steel

m o o o i[®]

Twill

composition

72% wo, 8% pa, 20% pl

abrasion

75.000 martindale

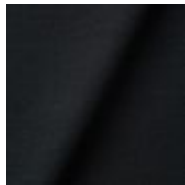
lightfastness 5

firetest

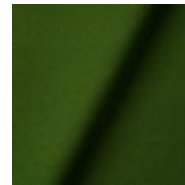
EN1021 I&2



Twill
Caviar



Twill
Graphite



Twill
Grass



Twill
Linen



Twill
Natural



Twill
Passion

m o o o i[®]

Twill Melange

composition

60% WO / 20% PES / 20% PA

abrasion

80.000 martindale

lightfastness 6-7

firetest

EN1021-1/2

US. Cal. Bull. 117-2013

BS5852 part1

DIN 4102-B2



Twill Melange
Chili



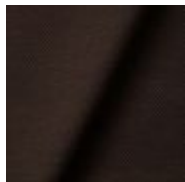
Twill Melange
Dust



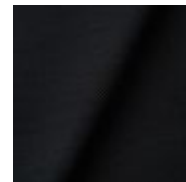
Twill Melange
Flour



Twill Melange
Lavender



Twill Melange
Peat



Twill Melange
Slate

m o o o i[®]

Trickle

composition

60% WO / 20% PES / 20% PA

abrasion

80.000 martindale

lightfastness 6

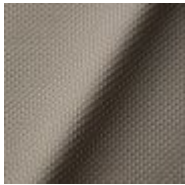
firetest

EN1021-1/2

US. Cal. Bull. 117-2013

BS5852 part1

DIN 4102-B2



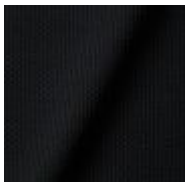
Trickle
Flour



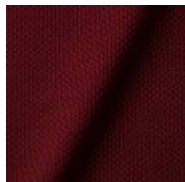
Trickle
Twig



Trickle
Peat



Trickle
Slate



Trickle
Chili



Trickle
Lavender

m o o o i[®]

Velour

composition

77% wo, 8% pa, 15% pl

abrasion

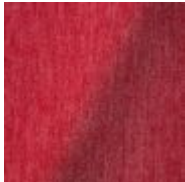
100.000 martindale

lightfastness 7

firetest

FR BS5852 0/1

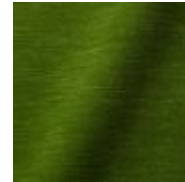
EN1021 I&2



Velour
Coral



Velour
Stone



Velour
Moss

Kvadrat Fabrics

Kvadrat Fabrics

Selected Moooi products can be upholstered with a collection of Kvadrat fabrics. Kvadrat designs high-quality upholstery, in an extensive range of colours and textures.

Go to our Kvadrat fabrics page for a full overview of all fabric families you can choose from.



Image not found or type unknown



Dodo Pavone Jacquard

composition

12% CO 88% PL

abrasion

40.000 Martindale rubs, EN ISO 12947

lightfastness

Note 5, EN ISO 105-B02

firetest

US. Cal. Bull. 117-2013

Upon request, with treatment:

BS5852 part I



**Extinct Animals
Fabric Collection**
Dodo Pavone Jacquard

Bearded Leopard Jacquard

composition

77% VI / 15% PES / 7% CO / 1% PA

abrasion

15.000 Martindale rubs, EN ISO 12947

lightfastness

Note 4-6, EN ISO 105-B02

firetest

EN1021-1/2

Upon request and with treatment:

BS5852 part I

m o o o i[®]



**Extinct Animals
Fabric Collection**
Bearded Leopard
Jacquard

Blushing Sloth Melange Mohair

composition

29% LANA / 24% LANA WM / 24% PES / 15% PA / 8% CO

abrasion

40.000 Martindale rubs, EN ISO 12947

lightfastness

Note 4-6, EN ISO 105-B02



**Extinct Animals
Fabric Collection**
Blushing Sloth Melange
Mohair

Blushing Sloth Woolly Mohair

composition

85% WV / 15% WM

abrasion

15.000 Martindale rubs, EN ISO 12947

lightfastness

Note 4-6, EN ISO 105-B02

firetest

EN1021-1/2

BS5852 part I



**Extinct Animals
Fabric Collection**
Blushing Sloth Woolly
Mohair

Calligraphy Bird Jacquard

composition

64% VI, 21% PES, 15% CO

abrasion

50.000 Martindale rubs, EN ISO 12947

lightfastness

Note 4-6, EN ISO 105-B02

firetest

Upon request, with treatment;

BS5852 part I

m o o o i[®]



Extinct Animals Fabric
Collection
Calligraphy Bird
Jacquard

The Silent Bison Velvet

composition

100% CO

abrasion

30.000 Martindale rubs, EN ISO 12947

lightfastness

Note 4-6, EN ISO 105-B02



Extinct Animals Fabric
Collection
The Silent Bison Velvet

The Menagerie of Extinct Animals

composition

100% PES

abrasion

50.000 Martindale rubs, EN ISO 12947

lightfastness

Note 4-6, EN ISO 105-B02

firetest

EN1021-1/2

Upon request, with treatment;

BS5852 part1



**Extinct Animals
Fabric Collection**

The Menagerie of
Extinct Animals

Dwarf Rhino Buffed

composition

100% steer

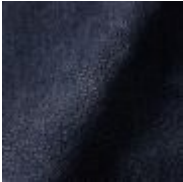
Type

Pure aniline, nubuck finish



Extinct Animals Fabric
Collection
Dwarf Rhino Buffed

Dwarf Rhino Crackle



**Extinct Animals
Fabric Collection**
Dwarf Rhino Crackle

Armoured Boar Crackle

composition

100% cow hide

Type of leather

Pure aniline, nubuck finish



**Extinct Animals
Fabric Collection**
Armoured Boar Crackle

Armoured Boar Hairy

composition

100% cow skin

lightfastness

>3, ISO 105-B02:2004



Extinct Animals Fabric Collection
Armoured Boar Hairy