

m o o o i<sup>®</sup>



## Perch Light Branch

---

A bird is gracefully balanced on a tall metal perch, beautiful and proud, a swinging glimmer of warm light... yet you are inside, after daylight has faded, under the spell of the Perch Light Floor Lamp!

---

**Designer**

Umut Yamac

**Year of design**

2016

**Material**

Steel, Aluminium, PP

**Additional**

Solid State LED

---

---

## Technical



**Input Voltage:**  
180-240V ~ 50/60Hz

**Power Consumption:**  
Max 15W

**Colour Temperature:**  
2700K

**Light source:**  
Solid State LED

**CRI:**  
80

**Lumen:**  
Approx 560lm

**Dimmable:**  
0-10V-, 1-10V-, PWM dimming  
Please make sure the right provisions are made for 0-10V/1-10V/PWM dimming.

**Canopy:**  
Ø20,5cm | 8,1" x 4,2cm | 1,7" in matching brass colour.

---

## Technical (UL)



**Input Voltage:**  
100-240V ~ 50/60Hz

**Power Consumption:**  
Max 20W

**Colour Temperature:**  
2700K

**Light source:**  
Solid State LED

**CRI:**  
80

**Lumen:**  
Approx 560lm

**Dimmable:**  
0-10V dimmable  
Please make sure the right provisions are made for 0-10V dimming.



---

## Recommended dimmer 0-10V dimmable

For fluent dimming behaviour we advise a dimmer that is compatible with the following specs:

**Transformer type:** Electronic Low Voltage (ELV) 0-10V Dim

**Load type:** Capacitive load (C-Type)

**Dimmer type:** 0-10V dimmable

*Please note the functioning of the dimmer and the power supply combination can never be predicted, it always needs to be tested in practice.*

# m o o o i<sup>®</sup>

---

## Suspension Cable & Poles

### Cable length

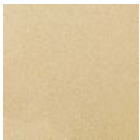
4M | 13.1ft (black) can be shortened down to 30cm | 11.8".  
(10M | 32.8ft on request)

### Suspension poles

You can adjust the length of the suspension pole. Enclosed there are 6 parts of suspension poles in 3 different sizes: 2x10cm (3.9"), 2x15 cm (5.9"), 2x50cm (19.6"). Total 1.5M | 4.9". Additional poles are available on special request.

---

## Colour



Brass



White

# m o o o i<sup>®</sup>

---

## Packaging

H 53 cm | 21,2"

W 34 cm | 13,6"

D 115 cm | 46"

Colli 1/1

With packaging:

8 KG | 18 lb

---

## dimensions

